

Customer :

N° :

Branch :

Date : 21 nov. 2016

Geared motor Multibloc with options

Mb2201 15.0 R_K LD H B3 MUT 4P LS71M 0,37kW B14 230VD/400VY 50Hz -

Connection network material Aluminium alloy ;

Utilisation : Environment Current ; Ambiance Non corrosive ; Finition - ; Zone Non specific ; General applications ; Ambient temperature -16 +40 °C ; Maximum altitude 1000 m.



Motor characteristics : Aluminium alloy housing ; Aluminium alloy DE endshield ; Aluminium alloy NDE endshield.

Gearbox characteristics : Cast iron housing ; Cast iron endshield

Gearbox definition

Protection type	-	Fixing form	R K
Gearbox serie	Mb	Position of the fixation	LD
Gearbox size	22	Operation position	B3
Capacity code	0	Low speed shaft	H
Number of stages code	1	Input interface	MUT
Exact ratio	15	PreMounting	A

Motor definition

Protection type	-	Application	General applications
Generation code	-	Main voltage (V)	400
Efficiency class	-	Connection	DY
Number of network phases	3	Motor winding (V)	230VD/400VY
Number of speed	1V	Rated Frequency (Hz)	50
Polarity	4P	Operation position	IM3601(IMB14)
Motor serie	LS	Index of protection	IP55
Frame size (mm)	71	Index of cooling	IC411
Lenght code	M	Insulation class	F
HS rated power (kW)	0.370	Finish	-
LS rated power (kW)	-	Moment of inertia J (kg.m2)	0.0008500
Rated speed (min-1)	1420	Motor weight (kg)	7.3
Maximum mechanical speed (min-1)	-		

Common definitions

Paint shade	RAL6000
Paint system	1a (1 polyurethane coat 20/30 microns)

Gearbox mechanical interface

Dimension of gearbox output flange	-	Input type	MUT
Diameter output shaft (mm)	25H7	Gearbox input flange	F30
Lenght output shaft (mm)	108		
Shaft material type	Steel shaft		
Nuance of shaft material	-		

Motor mechanical interface

Mounting flange	FT85	Shaft material type	Steel shaft
Drive end shaft type	IEC STANDARD shaft end	Nuance of shaft material	-
Diameter DE shaft (mm)	-	Second shaft extension	-
Length DE shaft (mm)	-	Diameter NDE shaft (mm)	-
DE bearing mounting	Locked	Second shaft end length (mm)	-
DE bearing type	DE ball bearing	NDE bearing type	NDE ball bearing
DE bearing	6202	NDE bearing	6201
Code Type de graissage	Vie		

Motor electrical interface

Connection network type	Terminal box	Cable type	Cable type
Connection network material	Aluminium alloy	Cable gland material	Polyamide cable gland
Connection network position	A	Main cable gland type	1xPE ISO M16
Connection network orientation	up	Principal cable gland position	Right (1)
Connection network relative position	0	Auxiliary cable gland type	-

N° :

Date : 21 nov. 2016

Designation : Mb2201 15.0 R_K LD H B3 MUT 4P LS71M 0,37kW B14 230VD/400VY 50Hz -

Gearbox options

Lubricant type	Synthetic oil ISO VG 460	Back stop	-
Lubrication oil pump	-	Direction of rotation of Output shaft	-
Screw material	Steel screw	Silent block	-
Nameplate material	Silvered polyester nameplate		
Cooling system	-	External cooling required	-
ATEX data sheet	--		

Motor options

Vibration level	A (25µm ; 1.6mm/s ; 2.5m/s²)	Cover	Metal cover
Balancing type	Half-key (H)	Drip proof cover option	-
Impregnation type	< 95% ; -16+40°C (T)	cooling type	-
Winding thermal protection	-	Forced ventilation characteristics	-
Space heater	-	Encoder type	-
Draining plugs position	6H	Encoder characteristics	-
Nameplate material	Aluminium nameplate	Screw material	Steel screw
Endshield thermal protection	-	Adaptation for vibration sensor	-

Gearbox characteristics (on mains supply)

Exact output speed (min-1)	94.67	Index of reduction	15
Available torque on the output shaft (N.m)	27.60	Lubrication quantity (l)	0.21
K factor	3.91	Input thermic power (kW)	0.97 (20°C)
ReNum / ReDen	15/1	Backlash (° dec.)	0.4200000
Ratio type	Defined ratio	Geared motor mass (kg)	20.3

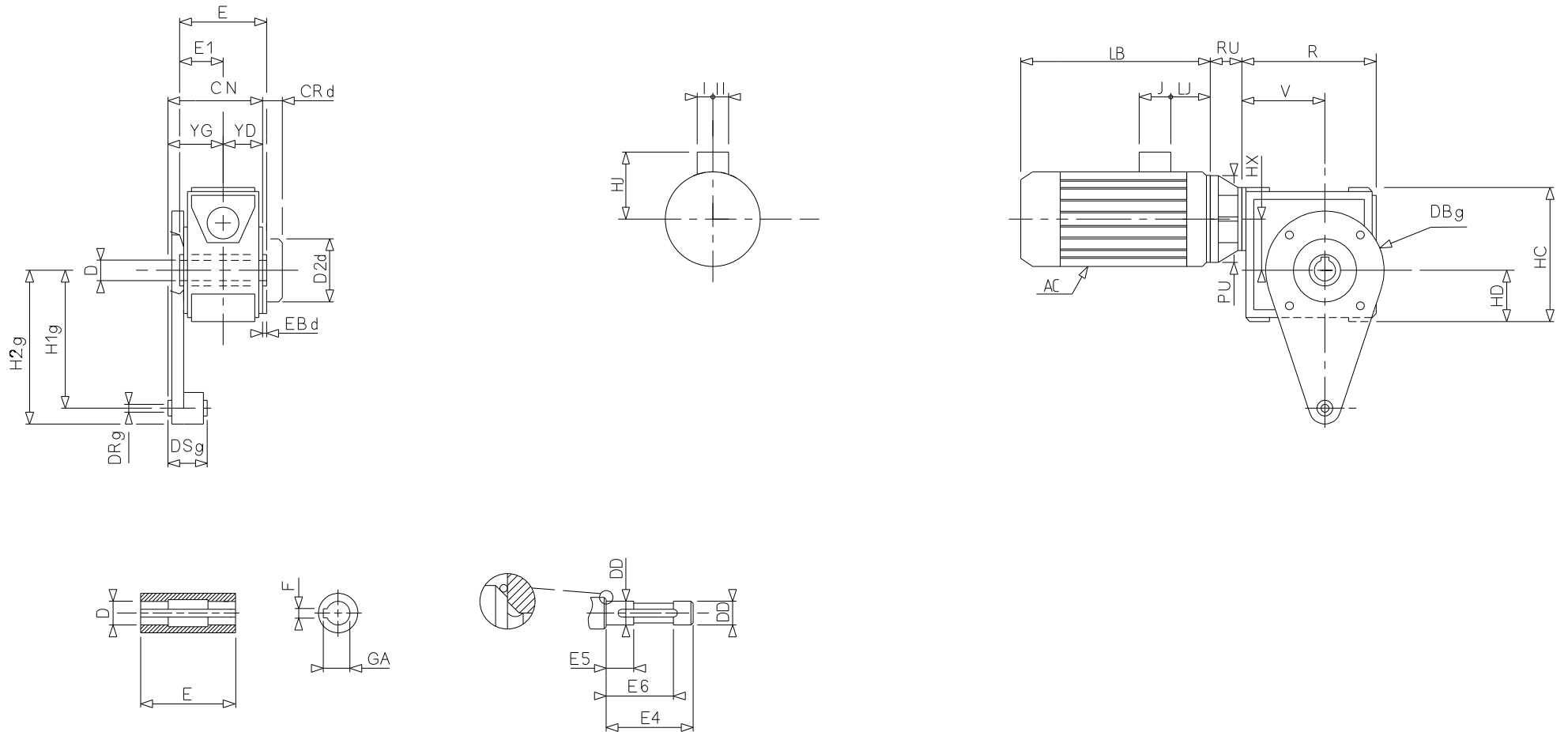
Motor characteristics (on mains supply)

Rated speed (min-1)	1420	Unload maximum starting frequency (d/h)	-
Rated current (A)	1.06	Acoustic pressure level (dB(A))	49
No-load current (A)	-	Power factor at 4/4 of the load	0,7
Id / In	4.91	Power factor at 3/4 of the load	0,59
Rated torque (N.m)	2,49	Power factor at 2/4 of the load	0,47
Starting torque (N.m)	6.0	Efficiency at 4/4 (IEC 60 034-2-1) of the load (%)	70.00
Maximum torque (N.m)	7	Efficiency at 3/4 (IEC 60 034-2-1) of the load (%)	70.00
Average starting torque (N.m)		Efficiency at 2/4 (IEC 60 034-2-1) of the load (%)	64.00
Rotor locked time (cold) (s)			

N° :

Date : 21 nov. 2016

Designation : Mb2201 15.0 R_K LD H B3 MUT 4P LS71M 0,37kW B14 230VD/400VY 50Hz -



Version V8.162

© Emerson 2014. The information contained in this data-sheet is for guidance only and does not form part of any contract. The accuracy cannot be guaranteed as Emerson have an ongoing process of development and reserve the right to change the specification of their products without notice.

Control Techniques Limited. Registered Office: The Gro, Newtown, Powys SY16 3BE. Registered in England and Wales. Company Reg. No. 01236886.

Moteurs Leroy-Somer SAS. Headquarters: Bd Marcellin Leroy, CS 10015, 16915 Angoulême Cedex 9, France. Share Capital: 65 800 512 €, RCS Angoulême 338 567 258.

N° :

Date : 21 nov. 2016

Designation : Mb2201 15.0 R_K LD H B3 MUT 4P LS71M 0,37kW B14 230VD/400VY 50Hz -

Motor (° & mm)		Gearbox (° & mm)							
A	-	ad	-	DTg	-	M2d	-	XB	-
AA	-	ag	-	E	108	M2g	-	XC	-
AB	-	a1d	-	E1	54.00	M3d	-	XD	-
AC	140.00	a1g	-	E2	-	M3g	-	XE	-
AD	-	a2d	-	E4	97 / 107	nd	-	XF	-
AD1	-	a2g	-	E5	35	Nd	-	XG	-
B	-	a3d	-	E6	72	ng	-	XH	-
BB	-	a3g	-	EBd	4	Ng	-	XI	-
C	-	a4d	-	EBg	-	O	-	YD	49.00
DA	-	a4g	-	EC	-	Os	-	YG	66.50
DTP	-	a5d	-	ECs	-	Pd	-		
EA	-	a5g	-	ED	-	Pg	-		
EC	-	a6d	-	EDs	-	p	-		
FA	-	a6g	-	EE	-	ps	-		
GB	-	a7d	-	EEs	-	PU	105.00		
GF	-	a7g	-	Es	-	R	140.00		
H	-	CN	115.5	EX	-	RR	-		
HA	-	CRd	23.5	EXs	-	RU	32.0		
HJ	109.0	CRg	-	EY	-	Sd	-		
I	43.5	CX	-	EYs	-	Sg	-		
IB	-	D	25H7	F	8	S1	-		
II	43.5	D2d	65	Fs	-	S3	-		
J	87	D2g	-	G	-	S4d	-		
JC	-	D3d	-	GA	28.3	S4g	-		
JD	-	D3g	-	GD	-	S5d	-		
JE	-	D4d	-	GDs	-	S5g	-		
JH	-	D4g	-	Gs	-	SU	-		
JP	-	DBd	-	H1d	-	Td	-		
K	-	DBg	-	H1g	130	Tg	-		
L2	-	DD	25h6	H2d	-	V	84		
LB	186.0	DE	-	H2g	151	VA	-		
LC	-	DKd	-	H3d	-	VB	-		
LD	-	DKg	-	H3g	-	VC	-		
LE	-	DLd	-	H4d	-	VD	-		
LH	-	DLg	-	H4g	-	VE	-		
LJ	23.5	DMd	-	HB	-	VK	-		
LO2	-	DMg	-	HC	140	VL	-		
OA	-	DNd	-	HD	56	VM	-		
pA	-	DNg	-	HF	-	VO	-		
LP	-	DRd	-	HX	45	VP	-		
rs2	-	DRg	10H10	LAd	-	VQ	-		
ts2	-	Ds	-	LAg	-	VR	-		
ts3	-	DSd	-	Md	-	VSd	-		
x	-	DSg	33	Mg	-	VSg	-		
		DTd	-	M1	-	XA	-		