

CUTTING
WELDING

SINCE 1898



Hot Air Devices Floor Welding Machine Nozzles, Accessories



**Made in
Germany**
Since 1898

Table of contents

Hot air devices	3
Hot air device for paint scraping	4
Transport box for hot air devices	4
Floor welding machine	5
Installation units for external air supply	6
Blower	7
Hand welding devices	8
Temperature measuring device	8
Nozzles for UNITHERM K5.8 RS / K5.16 RS / K10	9
For universal application	9
For floor welding	11
For foil welding.	12
Nozzles slip-on type for JUMBOTHERM K25.16 / K25.30	13
Accessories	14
General accessories	14
For floor welding	15
For foil welding.	16
Other accessories	17
Heating elements	18
Combinations	19

Hot air devices

ZINSER UNITHERM K5.8 RS / K5.16 RS



Universal electrical hot air welding device with integrated blower

For welding, preheating, shaping and shrinking of thermoplastic materials, heating, drying etc.

- Insulated outer-sleeve
- Continuous electr. regulation of temperature up to 600 °C
- Electronic heating element control
- Air flow regulation

Weight: 1.3 kg

Power supply lead: 3 m with shock-proof plug

UNITHERM K5.8 RS

800 W / 230 VAC

2810005-201

800 W / 120 VAC

2810005-203

UNITHERM K5.16 RS

1600 W / 230 VAC

2810005-202

1600 W / 120 VAC

2810005-204

ZINSER JUMBOTHERM K25.16 / K25.30



Electrical hot air welding device with integrated blower

For preheating, shrinking and bending of thermoplastic materials, heating, drying etc.

- Insulated outer sleeve
- Continuous electr. regulation of temperature up to 600 °C
- Electronic heating element control
- Air volume: approx. 300 l/min at 3000 Pa

Weight: 1.5 kg

Power supply lead: 3 m with shock-proof plug

JUMBOTHERM K25.16

1600 W / 120 VAC

2810025-037

JUMBOTHERM K25.30

3000 W / 230 VAC

2810025-036

ZINSER UNITHERM K10



Electrical hot air welding device for external air supply (e.g. side channel compressor)

For welding, preheating, shaping and shrinking of thermoplastic materials, heating, drying etc.

- Insulated outer-sleeve
- Continuous electronic regulation of temperature up to approx. 600 °C.
- Electronic overheating protection for heating element in case of failure of air supply

Weight: 0.4 kg

Power supply lead: 5 m with shock-proof plug

Air hose: 4 m

UNITHERM K10

1600 W / 230 VAC

2810010-013

1600 W / 120 VAC

2810010-014

Hot air device for paint scraping

ZINSER UNITHERM K5.30 FR



Universal electric hot air device with integrated blower

For stripping of lacquers and paint, solving bonding agents and for preheating

- Insulated outer-sleeve
- Continuous electronic regulation of temperature up to approx. 520 °C
- Electronic heating element control
- Controllable air volume, approx. 200 l/min
- Wide-slot nozzle, 70 mm with scraper

Weight: 1.7 kg

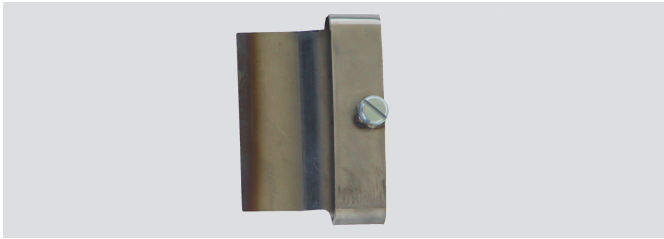
Power supply lead: 3 m with shock-proof plug

UNITHERM K5.30 FR

3000 W / 230 VAC

2810005-069

Scraper



Width: 70 mm

Scraper

2840199-009

Transport box for hot air devices

Transport box for hot air devices, empty



Fits one of the following devices:

- UNITHERM K5.8 RS / K5.16 RS,
- JUMBOTHERM K25.30 / K25.16 or
- UNITHERM K5.30 FR

plus accessories

Dimensions: 490 x 110 x 260 mm

Transport box for hot air devices, empty

2850196-002

Floor welding machine

ZINSER floor welding machine K58



For floors made of PVC, linoleum and rubber

- Driving carriage with electronic advance regulation
- Automatic swivel device
- Stepped coil holder
- Hot air welding device JUMBOTHERM with multiple nozzle

Nominal power: 3000 W / 1600 W

Max. temperature: 600 °C (230 VAC)

Weight: 14.5 kg

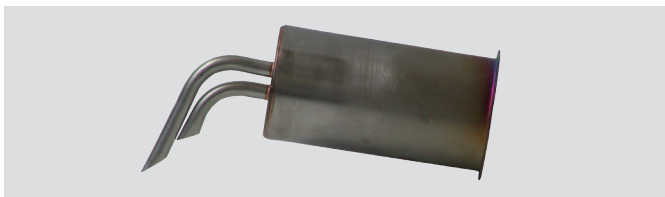
Power supply lead: 5 m with shock-proof plug

Advance speed: 2 - 10 m/min progressive

ZINSER floor welding machine K58

3000 W / 230 VAC	2810058-001
1600 W / 120 VAC	2810058-002

Polyolefine nozzle, twin



For floor welding machine K58

Polyolefine nozzle

2830197-045

Steel box, empty



For floor welding machine K58

Dimensions: 650 x 190 x 490 mm

Steel box

2850196-004

Joint milling machine KFU 1000 E, complete with metal transport box



Input power with continuous duty: 900 W

Number of revolutions: 8000 - 13000 rpm

Milling blade: Ø 120 mm

Milling depth: 0 - 4.5 mm

Scope of delivery joint milling machine KFU 1000 E:

- 1 slot milling blade, Ø 120 x 3.6 x 20 mm, 12 teeth
- 1 transport box
- 1 dust collector with hoop and holder
- 1 operating tool
- 1 power supply lead, 10 m

Joint milling machine KFU 1000 E

900 W / 230 VAC	2839000-010
-----------------	-------------

Installation units for external air supply

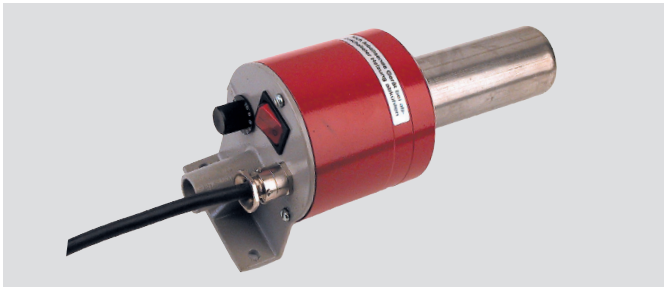
ZINSER hot air devices - JUMBOTHERM MK -

For fixing at and in machines, shrink packaging machines, drying lines and others

Mounting unit for external air supply and connection to compressed air or blower (side channel compressor)

- Max. temperature: 650 °C
- Hose connection: Ø 25 mm
- Power supply lead: 3 m with shock-proof plug (other connections depending on technical requirement)
- Without air hose

ZINSER JUMBOTHERM MK-40



Hot air built-in unit for external air supply, variable temperature by means of external air volume regulation

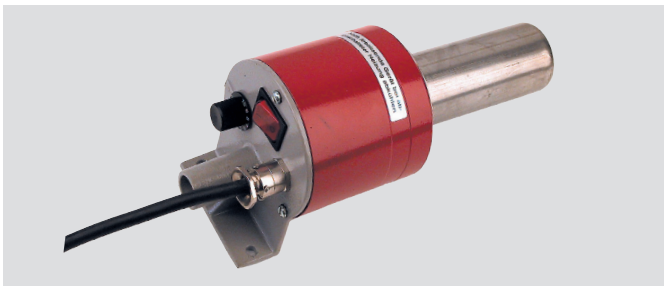
- Max. temperature: 650 °C
- Accessories: slip-on nozzles JUMBOTHERM K25.30
- Dimensions: 230 x 100 x 50 mm (cylindrical)

ZINSER MK-40

230 VAC / max. 3000 W

2810040-007

ZINSER JUMBOTHERM MK-40R



Hot air built-in unit for external air supply (like MK-40)

With additional progressive electronic regulation of temperature and heating element control.

- Dimensions: 270 x 100 x 50 mm (cylindrical)

ZINSER MK-40R

230 VAC / max. 3000 W

2810040-005

ZINSER MK-41



Hot air built-in unit for external air supply

Variable temperature by means of external air volume regulation (required heating power according to material or application)

- Max. temperature: 230 VAC: 650 °C
400 VAC: 700 °C
- Accessories: slip-on nozzles JUMBOTHERM
- Dimensions: 300 x 100 x 50 mm (cylindrical)

ZINSER MK-41

230 VAC / max. 3300 W

2810041-002

400 VAC / max. 3000 W

2810041-101

400 VAC / max. 5100 W

2810041-098

400 VAC / max. 6000 W

2810041-099

400 VAC / max. 7500 W

2810041-102

other heating power upon request

ZINSER JUMBOTHERM MK-42

Hot air built-in unit for external air supply with guide sleeve and tapered external sleeve (cooled), variable temperature by means of external air volume regulation

- Max. temperature: 650 °C
- Accessories: slip-on nozzles JUMBOTHERM
- Dimensions: 260 x 100 x 62 mm (conical)

ZINSER MK-42

230 VAC / max. 3000W

2810042-002

ZINSER JUMBOTHERM MK-42R

Hot air built-in unit for external air supply with guide sleeve and tapered external sleeve (cooled) (like MK-42)

With additional progressive electronic regulation of temperature and heating element control

- Dimensions: 295 x 100 x 62 mm (conical)

ZINSER MK-42R

230 VAC / max. 3000W

2810042-004

ZINSER JUMBOTHERM MK-45R

Hot air built-in unit for external air supply, variable temperature by means of external air volume regulation and heating element control

- Accessories: screw-on nozzles UNITHERM
- Dimensions: 270 x 100 x 35 mm (thread M16x1)

ZINSER MK-45R

230 VAC / max. 800 W

2810045-002

230 VAC / max. 1600 W

2810045-005

Blower

Side channel compressor

For air supply to all ZINSER hot air devices with external air supply, if no other compressed air source is available

Blower SV 1.50/3 230 VAC

Sufficient to connect 2 x K10 or 1 x MK-45R

With suction filter and double branch piece for 2 units

Without hose

2810220-001

Blower SV 5.130/2 230 VAC

Sufficient to connect 4 x K10 or 2 x MK-40 or

2 x MK-40R or 2 x MK-41 or 2 x MK-42R

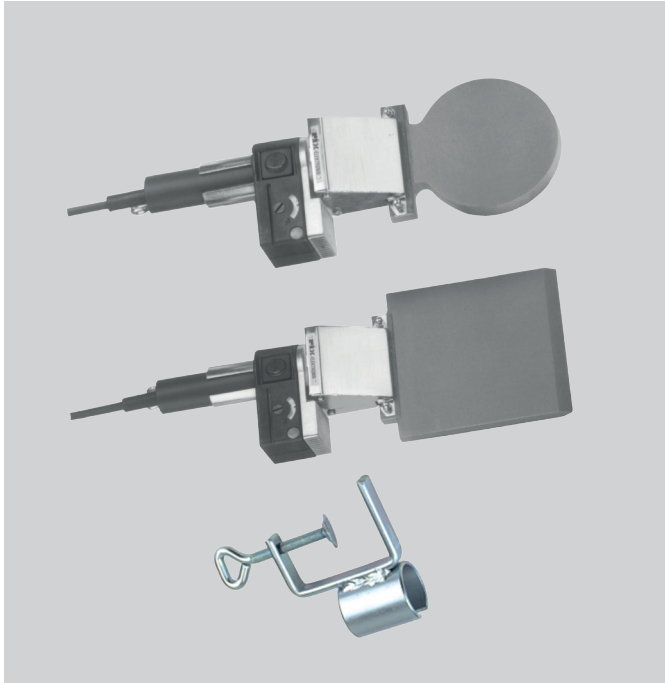
With suction filter and branch piece for 4 units

Without hose

2810220-005

Hand welding devices

Hand welding devices



Teflon™ coated with built-in thermostat

Including work bench fixation and mains cable with plug

Round

HG 120 T	heating surface Ø 120 mm	230 VAC	2819000-003
HG 200 T	heating surface Ø 200 mm	230 VAC	2819000-002
HG 300 T	heating surface Ø 300 mm	230 VAC	2819000-004
other Ø upon request			

Square

HGV 150 T	heating surface 150 x 150 mm	230 VAC	2819000-005
HGV 250 T	heating surface 250 x 250 mm	230 VAC	2819000-008

Sheet steel box*

For HG 120 T / HGV 150 T / HG 200 T	2850196-010
For HG 300 T / HGV 250 T	2850196-011

* suitable for above-mentioned hand welding devices with fixation for horizontal and vertical mounting

Temperature measuring device

Temperature measuring device



Measuring scope -200 up to +1370 °C (with chromium-nickel sensor, other sensors upon request)

With:

- Sensor for measuring the hot-air temperature
- Bag
- Batteries

Temperature measuring device

2839000-007

Nozzles for UNITHERM K5.8 RS / K5.16 RS / K10

For universal application

Standard welding nozzle, curved, screw-on type



Air outlet Ø 5 mm, conical

Suitable for slip-on:

- Rapid nozzle 283198-041 (welding cord Ø 3 and 4 mm)
- Rapid nozzle 283198-042 (welding cord Ø 5 mm)
- Super-Rapid nozzle 2830198-039 (welding cord Ø 3 and 4 mm)
- Super-Rapid nozzle 2830198-040 (welding cord Ø 5 mm)
- Welding nozzle with integrated guiding roller 2830198-032 (welding cord Ø 5 mm)

Standard welding nozzle, curved, screw-on type

2830197-001

Welding nozzle, curved, slip-on type



Air outlet Ø 5 mm, conical

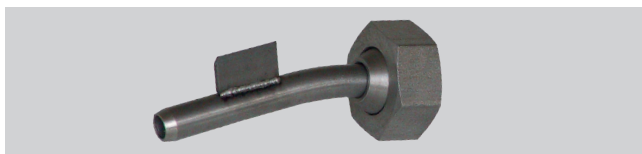
Suitable for slip-on:

- Rapid nozzle 2830198-041 (welding cord Ø 3 und 4 mm)
- Rapid nozzle 2830198-042 (welding cord Ø 5 mm)
- Super-Rapid nozzle 2830198-039 (welding cord Ø 3 und 4 mm)
- Super-Rapid nozzle 2830198-040 (welding cord Ø 5 mm)
- Welding nozzle with integrated guiding roller 2830198-032 (welding cord Ø 5 mm)

Welding nozzle, curved, slip-on type

2830198-033

Welding nozzle, curved, screw-on type, with knife



For thermoplastic material

Welding nozzle, curved, screw-on-type, with knife

Air outlet Ø 4 mm

2830197-004

Air outlet Ø 5 mm

2830197-005

Tack welding nozzle



For pre-fixing of thermoplastic material

Tack welding nozzle

2830197-002

Round nozzle Ø 22 mm



For heating, drying, shaping etc.

Round nozzle Ø 22 mm

2840076-121

Rapid-nozzle, screw-on type



For joint welding, with preheating of the welding rod made of plasticized PVC, Polyethylene, Polypropylene

Rapid-nozzle, screw-on type

For plastic filler rod Ø 3 mm and Ø 4 mm	2830198-021
For plastic filler rod Ø 5 mm / also for fusion welding cord	2830198-023
For profile joint according to sample rod	upon request

Rapid-nozzle, slip-on type



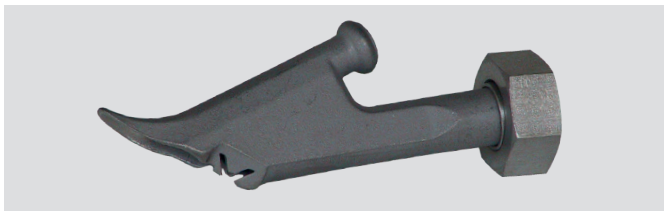
For joint welding, with preheating of the welding rod made of plasticized PVC, Polyethylene, Polypropylene

For slipping onto nozzles 2830197-001 / 2830198-033 (p.9)

Rapid-nozzle, slip-on type

For plastic filler rod Ø 3 mm and Ø 4 mm	2830198-041
For plastic filler rod Ø 5 mm	2830198-042

Super-Rapid nozzle, screw-on type



With preheating chamber for high-speed welding especially of unplasticized PVC, Polyethylene, Polypropylene

Super-Rapid nozzle, screw-on type

For plastic filler rod Ø 3 mm and Ø 4 mm	2830198-022
For plastic filler rod Ø 5 mm	2830198-024

Super-Rapid nozzle, slip-on type



With preheating chamber for high-speed welding especially of unplasticized PVC, Polyethylene, Polypropylene

For slipping onto nozzles 2830197-001 / 2830198-033 (p.9)

Super-Rapid nozzle, slip-on type

For plastic filler rod Ø 3 mm and Ø 4 mm	2830198-039
For plastic filler rod Ø 5 mm	2830198-040

Heating wedge



Teflon™-coated heating wedge for butt-welding of thermoplastic materials

Dimensions: 70 x 35 mm

Heating wedge

2830200-001

Outer sleeve



For UNITHERM K5.8 RS / K5.16 RS / K10

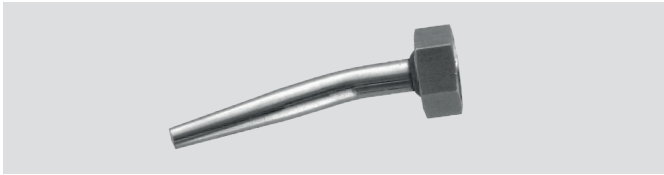
With outer diameter threaded M16x1

Outer sleeve for UNITHERM

2830076-006

For floor welding

Welding nozzle



For the perfect welding of PVC floor coverings, particularly Mipolam®

Welding nozzle

2830197-011

Welding nozzle, curved



Primarily for PVC and PVC felt flooring

Air outlet: Ø 6 mm

Welding nozzle, curved

2830197-006

Welding nozzle, widened



Especially for PVC and PVC felt flooring

Air outlet: Ø 8 mm

Welding nozzle, widened

2830197-007

Welding nozzle, 150 mm long



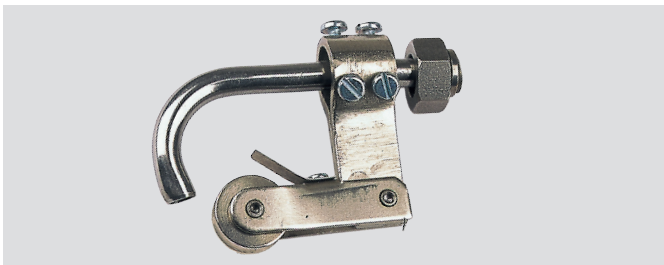
For welding in areas difficult to access

Air outlet Ø 5 mm

Welding nozzle, 150 mm long

2830197-010

Welding nozzle, with attached welding cord guiding roller



Welding nozzle, with attached welding cord guiding roller

For welding cord Ø 5 mm

2830197-040

For welding cord Ø 8 mm

2830197-039

For profile cord

upon request

Welding nozzle, with integrated welding cord guiding roller, screw-on type



Welding nozzle, integrated welding cord guiding roller, screw-on type

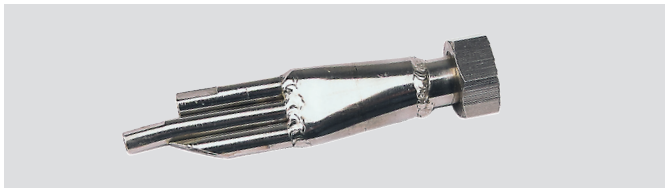
For welding cord Ø 5 mm

2830198-030

Welding nozzle, with integrated welding cord guiding roller, slip-on type

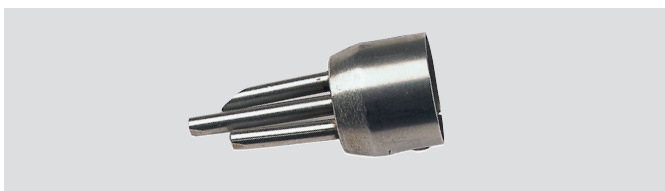
Suitable for slipping onto nozzles 2830197-001 and 2830198-033 (p. 9)

Welding nozzle, with integrated welding cord guiding roller, slip-on type
For welding cord Ø 5 mm 2830198-032

Triple-tip nozzle, screw-on type

For high speed welding of PVC and PVC felt flooring, in application with a guiding roller as for example 2830188-003 (p. 15)

Triple-tip nozzle, screw-on type
2830198-001

Triple-tip nozzle, slip-on type

For high speed welding of PVC and PVC-coated felt flooring, in application with a guiding roller as for example 2830188-003 (p. 15)

Triple-tip nozzle, slip-on type
2830198-037

For foil welding**Wide-slot nozzle, 16 x 2 mm**

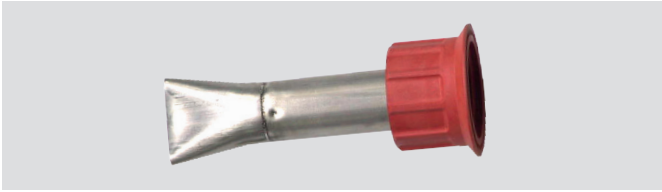
Wide-slot nozzle, 16 x 2 mm
2830199-001

Wide-slot nozzle, curved, 20 x 1.5 mm

Wide-slot nozzle, curved 20 x 1.5 mm
2830199-005

Wide-slot nozzle, 40 x 1.5 mm

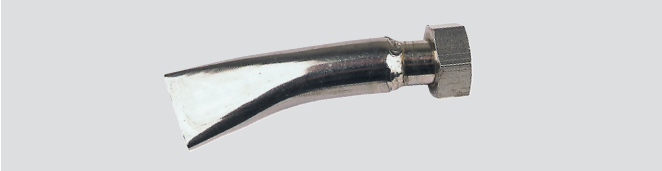
Wide-slot nozzle, 40 x 1.5 mm
2830199-004

Wide-slot nozzle, 45 x 4 mm, with front cap

For shaping, preheating, drying etc.

Wide-slot nozzle, 45 x 4 mm, with front cap

2830199-038

Foil welding nozzle, 20 x 1.5 mm**Foil welding nozzle, 20 x 1.5 mm**

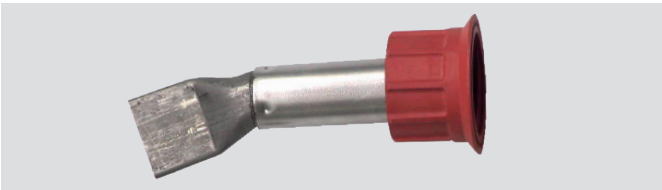
2830199-020

Foil welding nozzle, 20 x 2 mm, slip-on type**Foil welding nozzle, 20 x 2 mm, slip-on type**

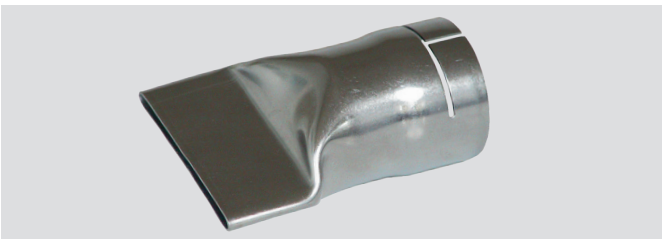
2830199-036

Foil welding nozzle, 40 x 2 mm, slip-on type**Foil welding nozzle, 40 x 2 mm, slip-on type**

2830199-034

Foil welding nozzle, 40 x 2 mm, with front cap**Foil welding nozzle, 40 x 2 mm, with front cap**

2830199-037

Nozzles slip-on type for JUMBOTHERM K25.16 / K25.30**Wide mouthpiece, 75 x 4 mm****Wide mouthpiece, 75 x 4 mm**

2830199-039

Wide-slot nozzle, 40 x 2 mm

For canvas welding

Wide-slot nozzle, 40 x 2 mm

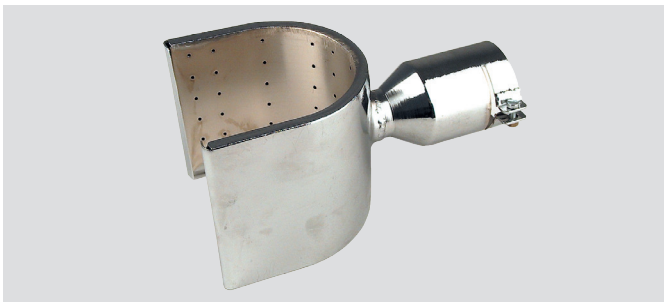
2830199-040

Cylindrical reflector

For heat tubing

Cylindrical reflector

Sizes upon request

Shell reflector

For preheating and shrinking of tubes, hoses and profiles

Shell reflector

Size 1: Ø 25 - 55 mm

2830195-021

Size 2: Ø 55 - 75 mm

2830195-022

Size 3: Ø 75 - 95 mm

2830195-023

Size 4: Ø 95 - 110 mm

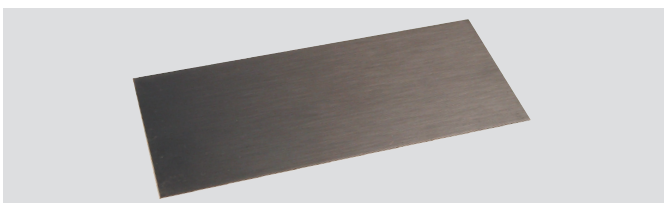
2830195-024

Accessories

General accessories

Spanner**Spanner**

2830035-002

Scraper blade, rectangular**Scraper blade, rectangular**

2830035-004

Scraper blade, swan-neck shaped

For scraping of welding rods

Scraper blade, swan-neck shaped

2830035-003

Three-square scraper**Three-square scraper**

2830035-005

Wire brush**Wire brush**

2830035-007

Round brush Ø 4 mm

To clean the nozzles

Round brush Ø 4 mm

2830035-010

For floor welding**Welding cord guiding roller**

For cord Ø 5 mm

Welding cord guiding roller

Diameter of roll 30 mm

2830188-003

Diameter of roll 20 mm

2830188-004

Welding cord guiding roller (Teflon™)

For linoleum edge joint sealing

Welding cord guiding roller (Teflon™)

2830188-049

Jointing plane



For cutting welding joints in plasticized PVC

Spare blade in handle

Jointing plane

Jointing plane	2830035-006
Spare blade	2839000-015

Jointing drawing device



For fast and simple manufacturing of joints in linoleum and rubber floorings

Jointing drawing device

Jointing drawing device cpl. with blade 2.5 mm	2830035-013
Spare blade 2.5 mm	2839000-017

Quarter circle cutter



For cutting soft welding beads during welding of flooring material

Quarter circle cutter

2830035-001

Weld seam slide

2830035-011

For foil welding

Pressure roller



For Rhepanol® foils

Pressure roller

2830188-001

Pressure roller, Ø 30 x 6 mm



Pressure roller, Ø 30 x 6 mm

Smooth	2830188-005
Knurled	2830188-006

Pressure roller, Ø 30 x 17 mm



For overlap welding up to 20 mm

Pressure roller, Ø 30 x 17 mm

Smooth	2830188-007
Knurled	2830188-008

Bonding tape pressure roller, with tape guide

For bond seam closure on truck tarpaulins

Bonding tape pressure roller, with tape guide

2830188-009

Wide pressure roller, Ø 30 x 50 mm

For overlap welding

Wide pressure roller, Ø 30 x 50 mm

2830188-055

Wide pressure roller, Ø 30 x 48 mm

For overlap welding

Wide pressure roller, Ø 30 x 48 mm

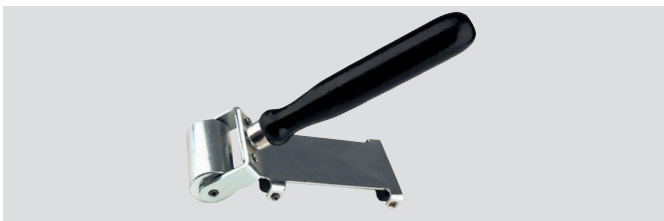
2830188-054

Wide pressure roller, with silicone coating, Ø 32 x 40 mm

For overlap welding up to 40 mm

Wide pressure roller, with silicone coating Ø 32 x 40 mm

2830188-026

Wide pressure roller, with tape guide

For overlap and string welding of plastic foils, up to 40 mm tape width

Wide pressure roller, with tape guide

2830188-002

Other accessories**Plastic filler rods****Plastic filler rods**

Initial equipment consists of 12 rods of each:

- Unplasticized PVC, round rods Ø 3 mm, grey
- Polypropylene (PP), round rods Ø 4 mm, light grey
- Polyethylene (PE), round rods Ø 4 mm, black

2840201-001

Plastic filler rods

Rods, ring bundles, small and big coils

Packing units:

- 1 m rods = approx. 3 kg
- Ring bundles = approx. 4 kg
- Small coils = approx. 2.5 kg
- Large coils = approx. 10 kg

upon request

Heating elements

for ZINSER UNITHERM K5.8 RS / K5.16 RS



Heating element for UNITHERM K5.8 RS

800 W	230 VAC	Ø 26 mm x 99.2 mm	2840181-242
800 W	120 VAC	Ø 26 mm x 99.2 mm	2840181-240

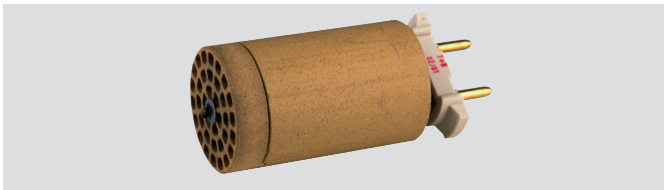
The mentioned length is without plugs.

Heating element for UNITHERM K5.16 RS

1600 W	230 VAC	Ø 26 mm x 99.2 mm	2840181-243
1600 W	120 VAC	Ø 26 mm x 99.2 mm	2840181-241

The mentioned length is without plugs.

for ZINSER JUMBOTHERM K25.16 / K25.30 / K5.30 FR and floor welding machine K58



Heating element for JUMBOTHERM K25.16 / K25.30 / K5.30 FR and floor welding machine K58

3000 W	230 VAC	Ø 44 mm x 88.5 mm	2840181-212
1600 W	120 VAC	Ø 44 mm x 88.5 mm	2840181-213

The mentioned length is without plugs.

for ZINSER UNITHERM K10 / K5.16 R



Heating element for UNITHERM K10 / K5.16 R

1600 W	230 VAC	Ø 26 mm x 100.2 mm	2840181-215
1600 W	120 VAC	Ø 26 mm x 100.2 mm	2840181-211

The mentioned length is without plugs.

for ZINSER JUMBOTHERM MK-40 / MK-40R / MK-42 / MK-42R



Heating element for JUMBOTHERM MK-40 / MK-40R / MK-42 / MK-42R

3000 W	230 VAC	Ø 46 mm x 139 mm	2840181-145
2200 W	120 VAC	Ø 46 mm x 140 mm	2840181-151

The mentioned length is without plugs.

for ZINSER JUMBOTHERM MK-41



Heating element für JUMBOTHERM MK-41

3300 W (single-stage)	230 VAC	Ø 46 mm x 200 mm	2840181-096
3000 W (3 x 1000)	400 VAC	Ø 46 mm x 200 mm	2840181-101
5100 W (3 x 1700)	400 VAC	Ø 46 mm x 200 mm	2840181-098
6000 W (3 x 2000)	400 VAC	Ø 46 mm x 200 mm	2840181-099
7500 W (3 x 2500)	400 VAC	Ø 46 mm x 200 mm	2840181-102

The mentioned length is without plugs.

for ZINSER JUMBOTHERM MK-45R and ZINSER UNITHERM K-NULL-R and K-5R



Heating element for JUMBOTHERM MK-45R and UNITHERM K-NULL-R and K-5R

800 W	230 VAC	Ø 32 mm x 122 mm	2840181-132
1600 W	230 VAC	Ø 32 mm x 122 mm	2840181-070
2400 W	230 VAC	Ø 32 mm x 122 mm	2840181-129
800 W	120 VAC	Ø 32 mm x 122 mm	2840181-148
1600 W	120 VAC	Ø 32 mm x 122 mm	2840181-149
2200 W	120 VAC	Ø 32 mm x 122 mm	2840181-150

The mentioned length is without plugs.

Combinations

each complete with steel box

			Welding of plasticized and unplasticized PVC		Welding of PVC-flooring material		Foil welding	Universal
			2810005-025*	2810005-052**	2810005-060*	2810005-061**	2810005-062	2810005-050
UNITHERM K5.8 RS	230 VAC / 800 W	2810005-201	●	●	●	●		
UNITHERM K5.16 RS	230 VAC / 1600 W	2810005-202					●	●
Nozzles								
Standard welding nozzle, curved, Ø 5 mm		2830197-001			●	●		
Tack welding nozzle		2830197-002	●	●				●
Welding nozzle, curved, with knife, Ø 4 mm		2830197-004	●					●
Welding nozzle, curved, with knife, Ø 5 mm		2830197-005	●	●				●
Welding nozzle, curved, Ø 6 mm		2830197-006			●	●		●
Welding nozzle, widened, Ø 8 mm		2830197-007			●	●		
Nozzle, attached welding cord guiding roller, Ø 4 mm		2830197-008				●		
Nozzle, 150 mm long		2830197-010				●		
Nozzle, PVC-Floors, -Mipolam®-		2830197-011				●		
Triple-tip nozzle, screw-on type		2830198-001				●		
Rapid nozzle, screw-on type, Ø 3 and 4 mm		2830198-021		●				●
Super-Rapid nozzle, screw-on type, Ø 3 and 4 mm		2830198-022		●				●
Rapid-nozzle, screw-on type, Ø 5 mm		2830198-023				●		
Nozzle, integrated welding cord guiding roller, Ø 5 mm		2830198-030				●		
Wide-slot nozzle, curved, 20 x 1.5 mm		2830199-005						●
Foil welding nozzle, 20 x 1.5 mm		2830199-020					●	●
Wide-slot nozzle, 40 x 2 mm		2830199-034					●	●
Heating wedge, 70 x 35 mm		2830200-001		●				●
Accessories								
Quarter circle cutter		2830035-001			●	●		●
Spanner		2830035-002	●	●	●	●	●	●
Scraper blade, swan-neck shaped		2830035-003	●	●				●
Scraper blade, rectangular		2830035-004	●	●				●
Three-square scraper		2830035-005	●	●				●
Jointing plane		2830035-006				●		●
Wire brush		2830035-007	●	●	●	●	●	●
Round brush, Ø 4 mm		2830035-010		●	●	●		●
Weld seam slide		2830035-011			●	●		
Joint drawing device		2830035-013			●	●		
Welding cord guiding roller for PVC, Ø 20 mm		2830188-004	●	●	●	●		●
Wide pressure roller, with silicone coating		2830188-026					●	●
Welding cord guiding roller		2830188-049				●		
Steel box, empty		2850196-002	●	●	●	●	●	●
Plastic filler rods (PVC / PP / PE)		2840201-001	●	●				●
Heating elements								
800 W 230 VAC		2840181-242		●		●		
1600 W 230 VAC		2840181-243					●	●

*basic equipment **extended equipment

**CUTTING
WELDING**

SINCE 1898



ZINSER GmbH

Daimlerstr. 4
73095 Albershausen
Germany

Phone +49 7161 5050-0
Fax +49 7161 5050-100
info@zinser.de

zinser.de

