

Data sheet

N° :

Geared motor Multibloc

Mb2401 40.0 R_K LD H B3 MUT 4P LSES 80LG 0,9kW IFT/IE2 B14 230D/380Y/400Y/415Y-460Y 50-60Hz -

Utilisation : Environment Common ; Ambiance Non corrosive ; Finition - ; Zone Non specific ; General applications ; Ambient temperature -16 +40 °C ; Maximum altitude 1000 m.

Motor characteristics : Aluminium alloy housing ; Cast iron DE endshield ; Aluminium alloy NDE endshield.



Gearbox characteristics : Cast iron housing ; Cast iron endshield

Gearbox definition

Protection type	-	Fixing form	R K
Gearbox series	Mb	Position of the fixation	LD
Gearbox size	24	Operation position	B3
Capacity code	0	Low speed shaft	H
Number of stages code	1	Input interface	MUT
Exact ratio	40	PreMounting	A

Motor definition

Protection type	-	Application	General applications
Generation code	IFT	Main voltage (V)	400
Efficiency class	IE2	Connection	DY
Number of network phases	3	Motor winding (V)	230D/380Y/400Y/415Y-460Y
Number of speed		Rated Frequency (Hz)	50-60
Polarity	4P	Operation position	IM3601(IMB14)
Motor series	LSES	Index of protection	IP55
Frame size (mm)	80	Index of cooling	IC411
Length code	LG	Insulation class	F
HS rated power (kW)	0.900	Finish	-
LS rated power (kW)	-	Moment of inertia J (kg.m2)	0.0031600
Rated speed (min-1)	1445	Motor weight (kg)	12.7

Common definitions

Paint shade	RAL6000
Paint system	C3L (1 x acrylic polyurethane finish (50µm +/- 20%))

Gearbox mechanical interface

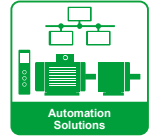
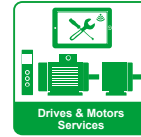
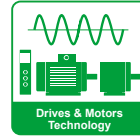
Dimension of gearbox output flange	-	Input type	MUT
Diameter output shaft (mm)	35H	Gearbox input flange	F45
Length output shaft (mm)	138		
Shaft material type	Steel shaft		
Nuance of shaft material	-		

Motor mechanical interface

Mounting flange	FT100	Shaft material type	Steel shaft
Drive end shaft type	IEC STANDARD shaft end	Nuance of shaft material	-
Diameter DE shaft (mm)		Second shaft extension	-
Length DE shaft (mm)		Diameter NDE shaft (mm)	-
DE bearing mounting	Locked	Second shaft end length (mm)	-
DE bearing type	DE ball bearing	NDE bearing type	NDE ball bearing
DE bearing	6205	NDE bearing	6204
Code Type de graissage	Vie		

Motor electrical interface

Connection network type	Terminal box	Cable type	Cable type
Connection network material	Composite materials	Cable gland material	Cable gland not supplied, holes tapped with polyamide plugs
Connection network position	A	Main cable gland type	1xM20 ; With plugs
Connection network orientation	up	Principal cable gland position	Right (1)
Connection network relative position	0		



Data sheet

N° :

Date : 12 mai 2020

Designation : Mb2401 40.0 R_K LD H B3 MUT 4P LSES 80LG 0,9kW IFT/IE2 B14 230D/380Y/400Y/415Y-460Y 50-60Hz -

Gearbox options

Lubricant type	Synthetic oil ISO VG 460	Back stop	-
Lubrication oil pump	-	Direction of rotation of Output shaft	-
Screw material	Steel screw	Silent block	-
Nameplate material	Silvered polyester nameplate	External cooling required	-
Cooling system	-		
ATEX data sheet	--		

Motor options

Vibration level	A (25µm ; 1.6mm/s ; 2.5m/s²)	Cover	Plastic cover
Balancing type	Half-key (H)	Drip proof cover option	-
Impregnation type	< 95% ; -16+40°C (T)	cooling type	-
Winding thermal protection	-	Forced ventilation characteristics	-
Space heater	-	Encoder type	-
Draining plugs position	6H	Encoder characteristic	-
Nameplate material	Aluminium nameplate	Screw material	Steel screw
End-shield thermal protection	-	Adaptation for vibration sensor	-

Gearbox characteristics (on mains supply)

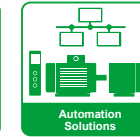
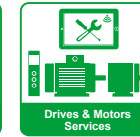
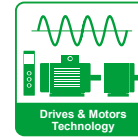
Exact output speed (min-1)	36.13	Index of reduction	40
Available torque on the output shaft (N.m)	156.06	Lubrication quantity (l)	0.63
K factor	1.74	Input thermic power (kW)	1.12 (20°C)
ReNum / ReDen	40/1	Backlash (° dec.)	0.3300000
Ratio type	Defined ratio	Geared motor mass (kg)	45.2

Motor characteristics (on mains supply)

Main voltage (V)	Rated Frequency (Hz)	HS rated power (kW)	Rated torque (N.m)	Rated speed (min-1)	Rated current (A)	Power factor at 4/4 of the load	Power factor at 3/4 of the load	Power factor at 2/4 of the load	Efficiency at 4/4 (IEC 60 034-2-1) of the load (%)	Efficiency at 3/4 (IEC 60 034-2-1) of the load (%)	Efficiency at 2/4 (IEC 60 034-2-1) of the load (%)
380	50	0.900	5.95	1435.00	2.00	0.83			81.60		
400	50	0.900	5.95	1445	1.95	0.8	0.72	0.5	82.30	83.40	82.60
415	50	0.900	5.95	1450.00	1.95	0.78			82.60		
460	60	0.9	4.9	1756.00	1.80	0.77			82.50		

Motor characteristics (on mains supply) 400 V 50 Hz

Starting torque (N.m)	11.4	Id / In	6.25
Average starting torque (N.m)		Id (A)	12.19
Maximum torque (N.m)	15	Maximum current (A)	
Unload maximum starting frequency (d/h)	-	No-load current (A)	0.00
Rotor locked time (cold) (s)		Acoustic pressure level (dB(A))	47

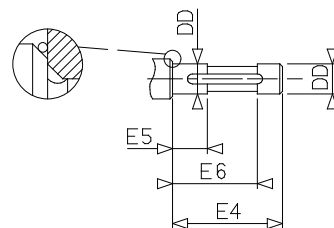
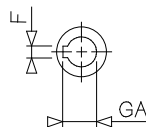
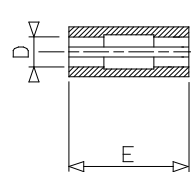
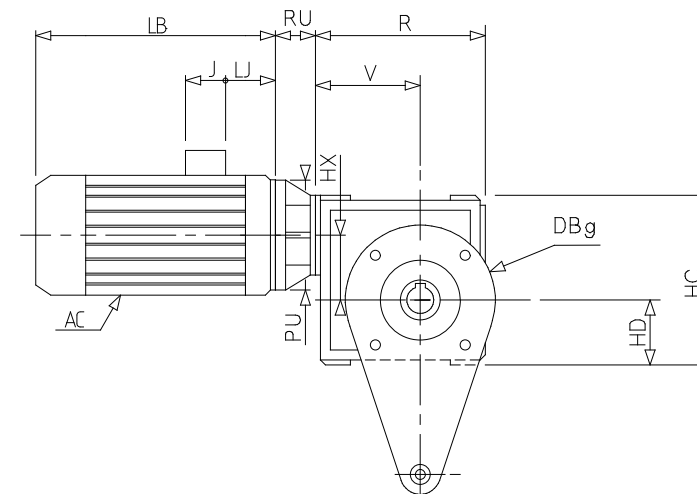
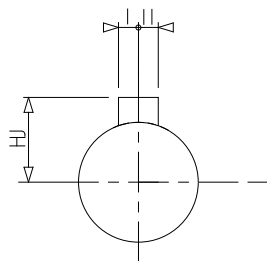
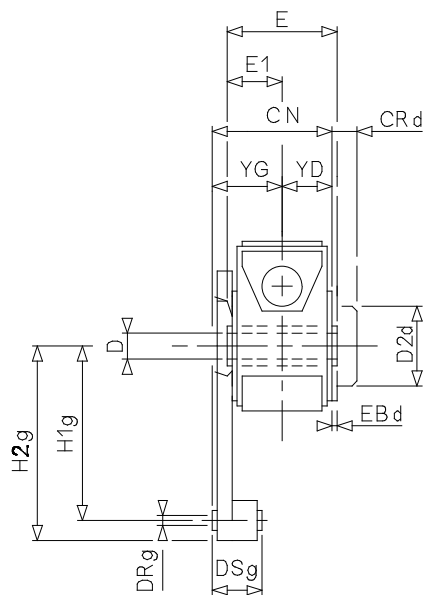


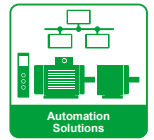
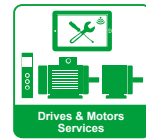
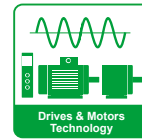
Data sheet

N° :

Date : 12 mai 2020

Designation : Mb2401 40.0 R_K LD H B3 MUT 4P LSES 80LG 0,9kW IFT/IE2 B14 230D/380Y/400Y/415Y-460Y 50-60Hz -





Data sheet

N° :

Date : 12 mai 2020

Designation : Mb2401 40.0 R_K LD H B3 MUT 4P LSES 80LG 0,9kW IFT/IE2 B14 230D/380Y/400Y/415Y-460Y 50-60Hz -

Motor (° & mm)

AC	189.00
HJ	133.0
I	43
II	43
J	86
LB	247.0
LJ	25.5
M	100
N	80
n	4
P	120
S	M6
T	3

Gearbox (° & mm)

CN	155.0
D	35H
E	138
F	10
HC	190
HD	75
HX	63
DD	35h6
E4	127 / 137
E5	45
CRd	28
D2d	95
DRg	16H10
DSg	54
PU	120.00
R	190.00
RR	-
RU	50.0
GA	38.3
E1	69.00
E6	92
EBd	5
H1g	200
H2g	230
LAg	-
V	115
YD	64.00
YG	91.00