

N° :

Date : 10 oct. 2019

Gearbox Multibloc

Mb2201 50.0 NU H B3 MUF / FF130 - 14x30

Utilisation : Environment Common ; Ambiance Non corrosive ; Zone Non specific



Gearbox characteristics : Cast iron housing ; Cast iron endshield

Gearbox definition

Protection type	-	Fixing form	NU
Gearbox serie	Mb	Position of the fixation	-
Gearbox size	22	Operation position	B3
Capacity code	0	Low speed shaft	H
Number of stages code	1	Input interface	MUF
Exact ratio	50	PreMounting	A

Common definitions

Paint shade	RAL6000	Finish	-
Paint system	C3L (1 x acrylic polyurethane finish (50µm +/- 20%))		

Gearbox mechanical interface

Dimension of gearbox output flange	-	Input type	MUF
Diameter output shaft (mm)	25H7	Gearbox input flange	F30
Lenght output shaft (mm)	108	Diameter gearbox input shaft	14
Shaft material type	Steel shaft	Lenght gearbox input shaft (mm)	30
Nuance of shaft material	-		

Gearbox options

Lubricant type	Synthetic oil ISO VG 460	Back stop	-
Lubrication oil pump	-	Direction of rotation of Output shaft	-
Screw material	Steel screw	Silent block	-
Nameplate material	Silvered polyester nameplate		
Cooling system	-	External cooling required	
ATEX data sheet	--		

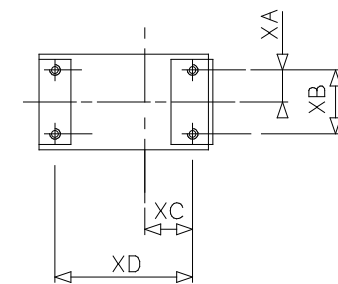
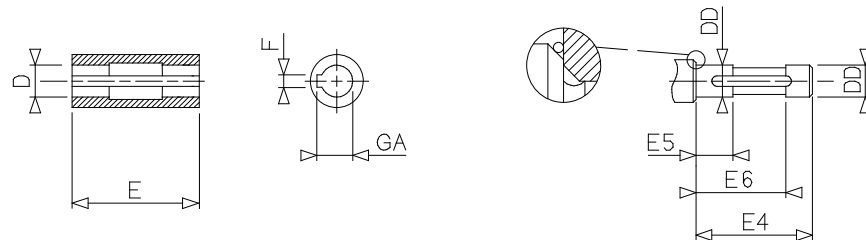
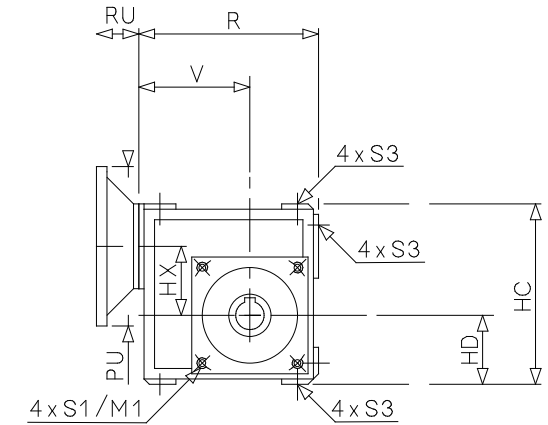
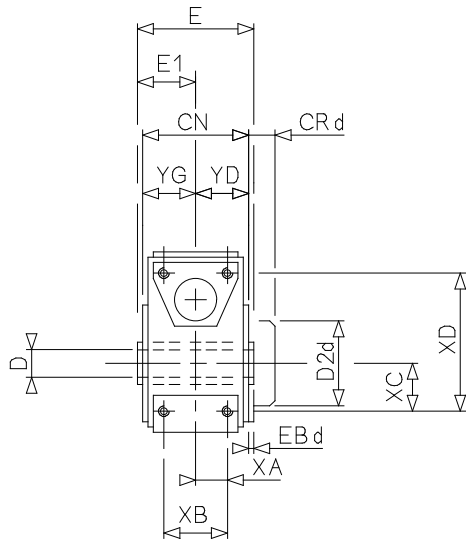
Gearbox characteristics (on mains supply)

Exact output speed (min-1)		Index of reduction	50
Available torque on the output shaft (N.m)		Lubrication quantity (l)	0.21
K factor		Input thermic power (kW)	
ReNum / ReDen	50/1	Backlash (° dec.)	0.3900000
Ratio type	Defined ratio	Gearbox mass (kg)	10.5

N° :

Date : 10 oct. 2019

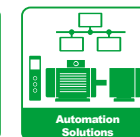
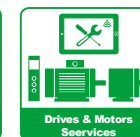
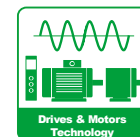
Gearbox Multibloc - Mb2201 50.0 NU H B3 MUF / FF130 - 14x30



LEROY-SOMER

The information contained in this data-sheet is for guidance only and does not form part of any contract. The accuracy cannot be guaranteed as our company have an ongoing process of development and reserve the right to change the specification of their products without notice.
 Moteurs Leroy-Somer SAS. Siège social : Bd Marcellin Leroy, CS 10015, 16915 Angoulême Cedex 9, France. Capital social : 65 800 512 €, RCS Angoulême 338 567 258.
 Control Techniques Limited. Registered Office: The Gro, Newtown, Powys SY16 3BE. Registered in England and Wales. Company Reg. No. 01236886.

Version V8.209



Data sheet

LEROY-SOMER[™]

The information contained in this data-sheet is for guidance only and does not form part of any contract. The accuracy cannot be guaranteed as our company have an ongoing process of development and reserve the right to change the specification of their products without notice.
Moteurs Leroy-Somer SAS. Siège social : Bd Marcellin Leroy, CS 10015, 16915 Angoulême Cedex 9, France. Capital social : 65 800 512 €, RCS Angoulême 338 567 258.
Control Techniques Limited. Registered Office: The Gro, Newtown, Powys SY16 3BE. Registered in England and Wales. Company Reg. No. 01236886.

Version V8.209

N° :

Date : 10 oct. 2019

Gearbox Multibloc - Mb2201 50.0 NU H B3 MUF / FF130 - 14x30

Gearbox
(° & mm)

ad	-	DKd	-	EP	0	Mg	-	Td	-
ag	-	DKg	-	Es	-	M1	105	Tg	-
a1d	-	DLd	-	EX	-	M2d	-	V	84
a1g	-	DLg	-	EXs	-	M2g	-	VA	-
a2d	-	DMd	-	EY	-	M3d	-	VB	-
a2g	-	DMg	-	EYs	-	M3g	-	VC	-
a3d	-	DNd	-	F	8	nd	-	VD	-
a3g	-	DNg	-	FA	0	Nd	-	VE	-
a4d	-	DP	0	Fs	-	ng	-	VK	-
a4g	-	DRd	-	G	-	Ng	-	VL	-
a5d	-	DRg	-	GA	28.3	O	-	VM	-
a5g	-	Ds	-	GC	0	OA	0	VO	-
a6d	-	DSd	-	GD	-	Os	-	VP	-
a6g	-	DSg	-	GDs	-	Pd	-	VQ	-
a7d	-	DTd	-	Gs	-	Pg	-	VR	-
a7g	-	DTg	-	H1d	-	p	-	VSd	-
CN	98.0	E	108	H1g	-	ps	-	VSg	-
CRd	23.5	E1	54.00	H2d	-	PU	160.00	WA	0
CRg	-	E2	-	H2g	-	R	140.00	XA	30
CX	-	E4	97 / 107	H3d	-	RAP	0	XB	60
D	25H7	E5	35	H3g	-	RR	-	XC	38
D2d	65	E6	72	H4d	-	RU	24.0	XD	105
D2g	-	EBd	4	H4g	-	Sd	-	XE	-
D3d	-	EBg	-	HB	-	Sg	-	XF	-
D3g	-	EC	-	HC	140	S1	M8x12	XG	-
D4d	-	ECs	-	HD	56	S3	M8x12	XH	-
D4g	-	ED	-	HF	-	S4d	-	XI	-
DBd	-	EDs	-	HX	45	S4g	-	YA	0
DBg	-	EE	-	LAd	-	S5d	-	YD	49.00
DD	25h6	EEs	-	LAg	-	S5g	-	YG	49.00
DE	-			Md	-	SU	-	ZA	0