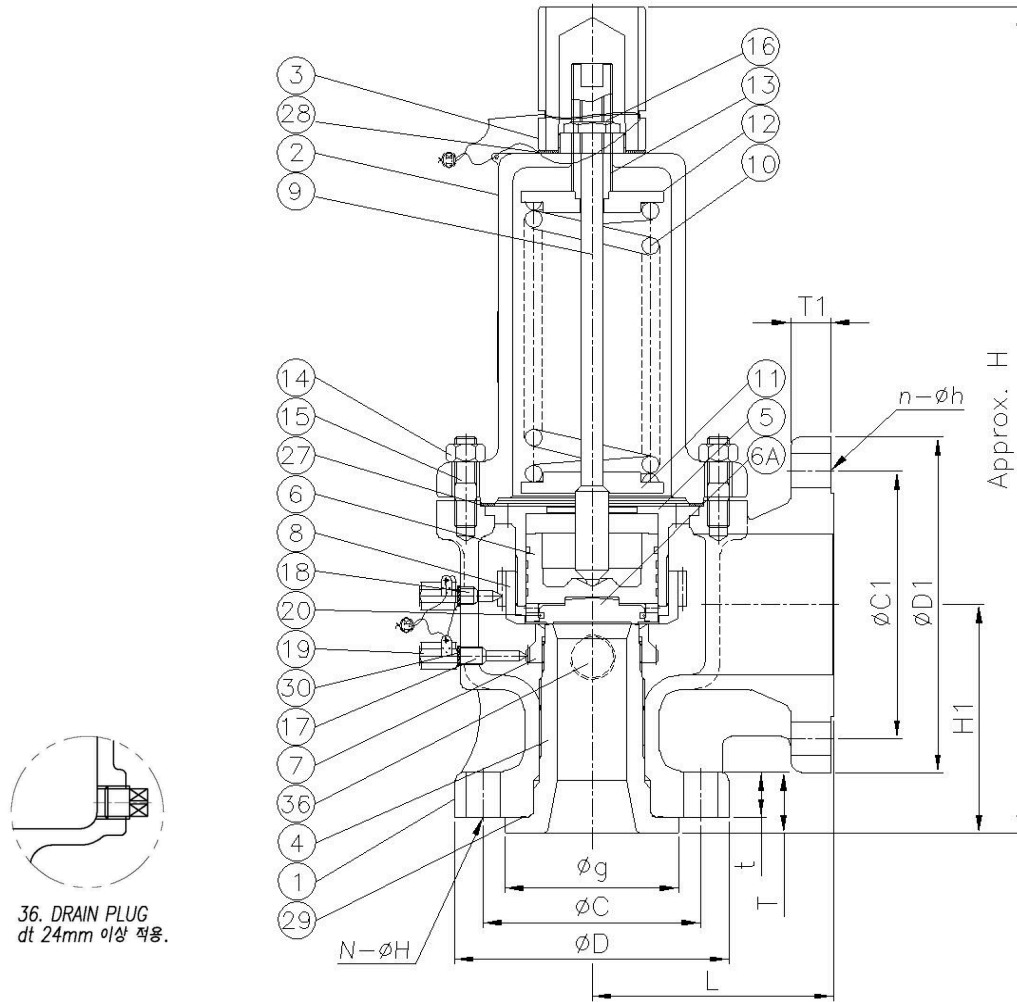


TAG NO. K291



36. DRAIN PLUG
dt 24mm 이상 적용.

36	PLUG	Carbon Steel	1
30	GASKET (SET SCREW)	PTFE	2
29	GASKET (SEAT)	PTFE	1
28	GASKET (CAP)	PTFE	1
27	GASKET (BODY)	PTFE	1
20	DISC RING	304 SS	1
19	CAP NUT	316 SS	2
18	SET SCREW (UPP)	316 SS	1
17	SET SCREW (LOW)	316 SS	1
16	LOCK NUT	304 SS	1
15	STUD BOLT	A193 B7	4
14	STUD NUT	A194 2H	4
13	ADJUST SCREW	410 SS	1
12	SPRING SEAT (UPP)	Carbon Steel	1
11	SPRING SEAT (LOW)	Carbon Steel	1
10	SPRING	Chrome Alloy(SWOSC-B)	1
9	STEM	304 SS	1
8	ADJUST RING (UPP)	304 SS	1
7	ADJUST RING (LOW)	304 SS	1
6A	DISC	304 SS -st.	1
6	HOLDER	304 SS	1
5	GUIDE	304 SS	1
4	SEAT	304 SS -st.	1
3	CAP	Carbon Steel	1
2	BONNET	A216 WCB or SC 480	1
1	BODY	A216 WCB or SC 480	1

NO	PART NAME	MATERIAL	QTY	REMARK
DWG NO	JKS-SLQ075651-10	Designed	Checked	Approved
MODEL	JSV-FF21	<i>JL</i>	<i>LM</i>	<i>SP</i>
DATE	2024-08-14	JKYOON	HMMUN	SYPARK
FULL BORE TYPE SAFETY RELIEF VALVE				REV
JOKWANG ILI				0

DIMENSION

UNIT : mm

SIZE	L	H1	H	INLET FLANGE ASME B 165 CL150 RF							OUTLET FLANGE ASME B 165 CL150 RF				Wt(kg)
				øD	øg	øC	øP	T	t	N-øH	øD1	øC1	T1	n-øh	
1-1/2"x1/2-1/2"	120	119	389	125	73	98.4	-	32	24	4-16	180	139.7	20.7	4-19	2023