

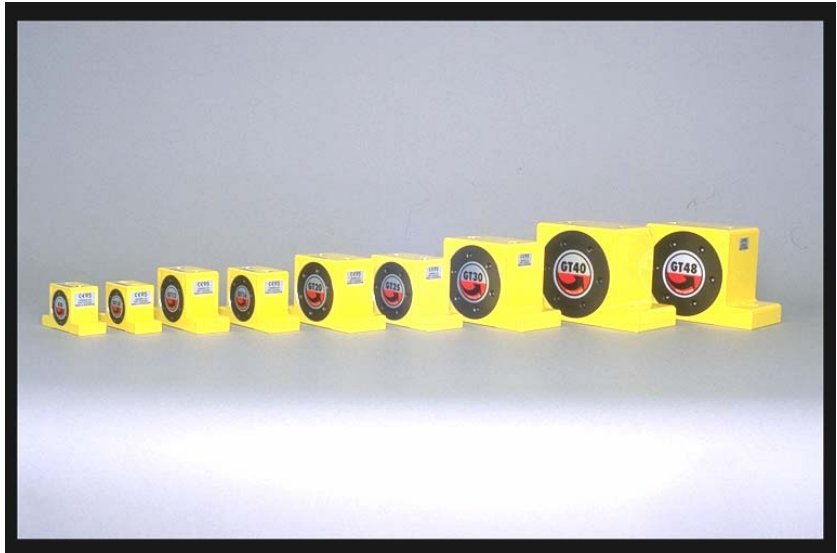
**Golden Turbine:**

A high speed range and eccentric working moments are combined in these vibrators to produce a powerful vibration. It is designed by the centrifugal force of the positive and negative unbalanced moments in the rotor.

The rotor is supported on two heavy duty, prelubricated, matched shielded bearings: A special long life grease ensures a long working life. The inner and outer raceways of the bearings are designed so that the bearings can be easily replaced using only a pin-wrench. The endplates are fitted with right- and left-hand threads and are self-locking.

The body is made from an extruded stove enamelled aluminium section and the hard coated end plates enables the vibrators to be used in the food and pharmaceutical industries.

The GT-turbine vibrators conform to current international noise regulations under factory test conditions.

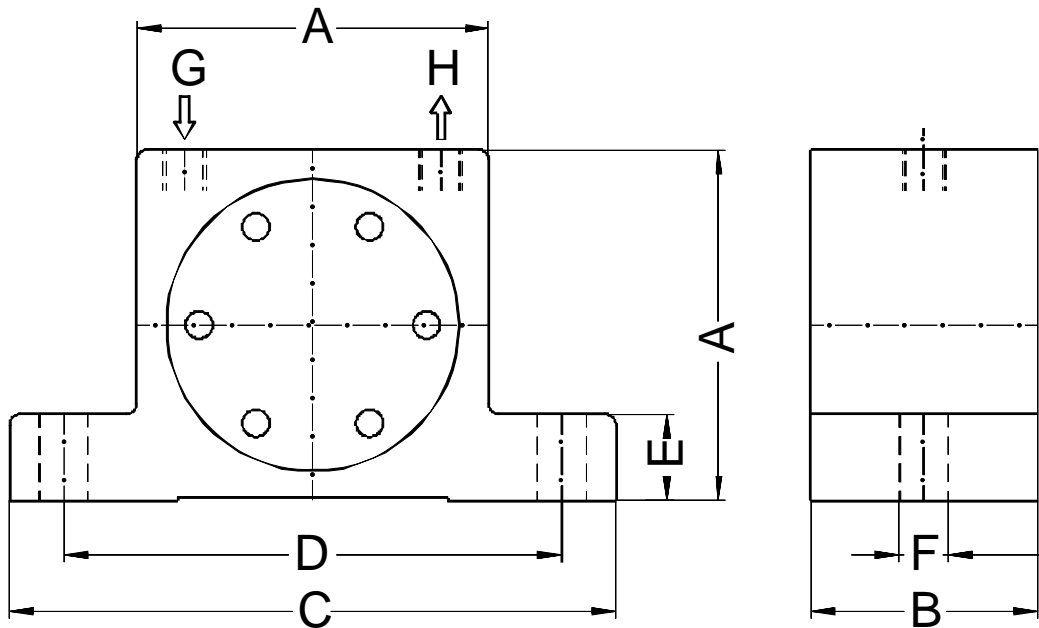


PERFORMANCE DATA									
model	FREQUENCY RPM			CENTRIFUGAL FORCE NEWTON			AIR CONSUMPTION l / min.		
	2 bar	4 bar	6 bar	2 bar	4 bar	6 bar	2 bar	4 bar	6 bar
<b>GT-04</b>	14000	15000	15000	135	180	200	33	58	83
<b>GT-06</b>	11500	12000	12500	130	175	210	33	58	83
<b>GT-08</b>	36000	42000	46000	990	2060	2910	46	80	112
<b>GT-10</b>	27500	35000	37500	840	1390	2400	46	80	112
<b>GT-10-S</b>	17000	23000	25000	650	1350	1950	46	80	112
<b>GT-13</b>	26000	30000	33000	1400	2440	3730	120	200	290
<b>GT-16</b>	17000	21500	24000	1220	2090	3160	120	200	290
<b>GT-16-S</b>	11500	15500	17000	1100	1900	2700	120	200	290
<b>GT-20</b>	17000	20000	23000	2170	4040	5520	185	325	455
<b>GT-25</b>	12000	15500	17000	2120	3510	5070	185	325	455
<b>GT-25-S</b>	8500	11000	13000	2250	3600	4900	185	325	455
<b>GT-30</b>	13000	14000	16000	3380	5430	7540	330	530	745
<b>GT-36</b>	8000	10000	13000	3290	5360	7190	330	530	745
<b>GT-36-S</b>	6100	7200	8300	4100	6200	7500	330	530	745
<b>GT-40</b>	7700	8800	9500	4300	7300	9800	425	700	970
<b>GT-48</b>	6000	7500	9700	4900	7700	10500	425	700	970
<b>GT-48-S</b>	1800	5600	6300	0	7500	12000	425	700	970

Data obtained with a Kistler 3-Axis Dynamometer on a heavy laboratory test block and displayed by a Kistler control monitor (COMO). Frequency and force will decrease on a less rigged mount.

[www.aldak.de](http://www.aldak.de) (only in German language) • [info@aldak.de](mailto:info@aldak.de)

**DIMENSIONS:**



in mm									weight
model	A	B	C	D	E	F	G	H	kg
GT-04	40.0	28.0	70.0	56.0	10.5	6.0	G 1/8"	G 1/8"	0.165
GT-06	40.0	28.0	70.0	56.0	10.5	6.0	G 1/8"	G 1/8"	0.170
GT-08	50.0	33.0	86.0	68.0	12.0	7.0	G 1/8"	G 1/8"	0.250
GT-10	50.0	33.0	86.0	68.0	12.0	7.0	G 1/8"	G 1/8"	0.255
GT-10-S	50.0	33.0	86.0	68.0	12.0	7.0	G 1/8"	G 1/8"	0.263
GT-13	65.0	42.0	113.0	90.0	16.0	9.0	G 1/4"	G 1/4"	0.565
GT-16	65.0	42.0	113.0	90.0	16.0	9.0	G 1/4"	G 1/4"	0.580
GT-16-S	65.0	42.0	113.0	90.0	16.0	9.0	G 1/4"	G 1/4"	0.614
GT-20	80.0	56.0	128.0	104.0	16.0	9.0	G 1/4"	G 1/4"	1.090
GT-25	80.0	56.0	128.0	104.0	16.0	9.0	G 1/4"	G 1/4"	1.120
GT-25-S	80.0	56.0	128.0	104.0	16.0	9.0	G 1/4"	G 1/4"	1.200
GT-30	100.0	73.0	160.0	130.0	20.0	11.0	G 3/8"	G 3/8"	2.200
GT-36	100.0	73.0	160.0	130.0	20.0	11.0	G 3/8"	G 3/8"	2.300
GT-36-S	100.0	73.0	160.0	130.0	20.0	11.0	G 3/8"	G 3/8"	2.530
GT-40	120.0	83.0	194.0	152.0	24.0	17.0	G 3/8"	G 3/8"	3.690
GT-48	120.0	83.0	194.0	152.0	24.0	17.0	G 3/8"	G 3/8"	3.890
GT-48-S	120.0	83.0	194.0	152.0	24.0	17.0	G 3/8"	G 3/8"	4.290

We reserve the right to improve, modify or withdraw specifications or products without notice or obligation.

www.aldak.de (only in German language) • info@aldak.de