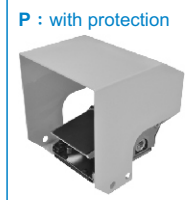


Specification

Model	MVFA-230	MVFA-231	MVFA-240
Bore No.	8A		
Port size	Rc1/4		
No. of port	3		4
No. of position	2		
Medium	Air		
Operating pressure range	0.2~0.7 MPa		
Proof pressure	1 MPa		
Effective orifice	8 mm ²		
Ambient temperature	- 5~ + 60°C (No freezing)		
Weight (with protection)	684 (1426) g	739(1481) g	774(1516) g



Order example

MVFA - 230 - 8A - P L - G

MODEL

8A: Rc1/4

P: with protection
L: with lock

PORT THREAD
Blank: Rc thread
G: G thread
NPT: NPT thread

230: 3ways-2positions NC
231: 3ways-2positions NO
240: 4ways-2positions

MVFA-230-8A-(L)

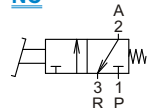
MVFA-231-8A-(L)

MVFA-230-8A-P(L)

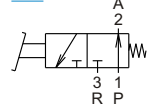
MVFA-231-8A-P(L)

MVFA-230 / 231

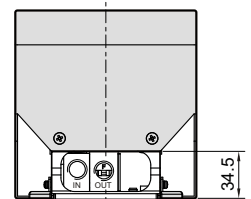
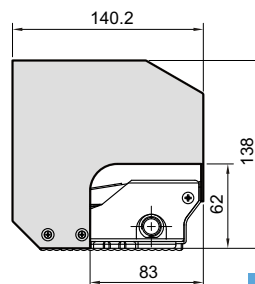
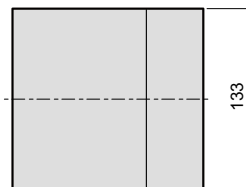
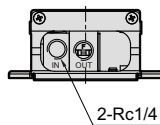
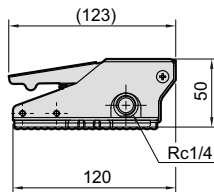
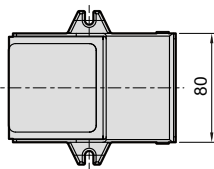
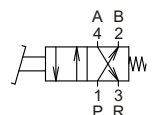
NC



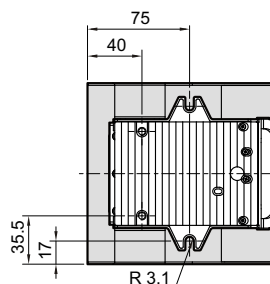
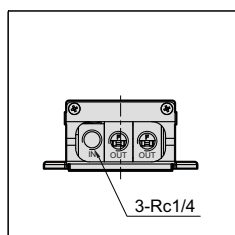
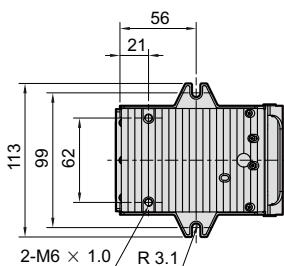
NO



MVFA-240



MVFA-240-8A-(L)



MVFA-240-8A-P(L)

