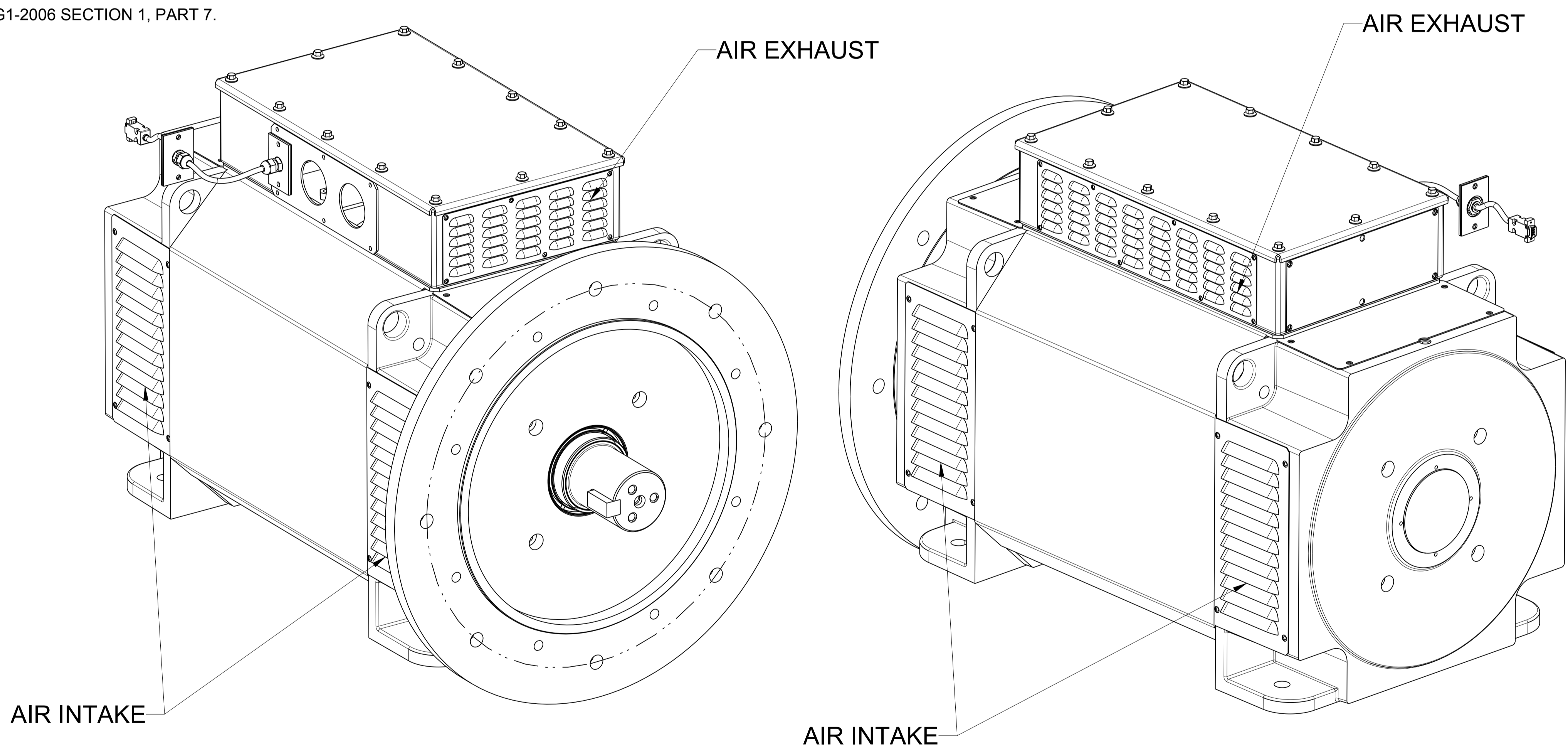


REVISIONS					
ZONE	REV	ECN	DESCRIPTION	DATE	APP'D
	A	77103	ORIGINAL RELEASE	2008MAR19	L.STUTTS J.LINDSEY
	B	77133	ADDED NOTE 16	2008APR07	L.STUTTS J.LINDSEY
2-C3	C	77426	CHANGED GDT TOLERANCE 0.25 WAS 0.16.	2008AUG07	C. LEAMON J.LINDSEY
	D	77593	440-480 VOLTS WAS 380-480 VOLTS; ADDED NOTE 16.	2008OCT28	S.DIETRICH G.FEE
1-A7 2-C1	E	78217	SUPPLIER DRAWING NUMBER WAS 2_012_858 DIM Ø 665 WAS Ø 622.	2010FEB02	N.VIJAY T.VINCENT

- NOTES:
1. MOTOR DESIGN/CONSTRUCTION PER IR SPEC. 92-3.02.
 2. MUST BE UL/CUL LISTED AND CSA CERTIFIED.
 3. IP23 ENCLOSURE RATING.
 4. 2200MM LEAD LENGTH (MAIN MOTOR CABLE).
 5. SINGLE VOLTAGE CONNECTION FOR 400 VOLTS.
 6. 2000MM LEAD LENGTH (HALL SENSOR).
 7. LOAD APPLIED AT THE PITCH DIAMETER OF GEAR.
 8. MOTOR KEY TO BE PROVIDED AS SHOWN.
 9. SHAFT SLEEVE SUPPLIED BY I-R WILL FIT ON MOTOR SHAFT TO THE SHOULDER OF THE SHAFT.
 10. FLANGE MOUNT AT DE AND FOOT MOUNTING AT NDE.
 11. MAXIMUM SPEED 2800 RPM.
 12. SERVICE FACTOR 1.21.
 13. AMBIENT TEMPERATURE: 46° C.
 14. MAXIMUM TORQUE: 1098NM @ 2360 RPM.
 15. MAXIMUM VIBRATION LEVELS PER NEMA MG1-2006 SECTION 1, PART 7.
 16. RATED VOLTAGE = 400V +/- 10%.




LEROY SOMER	16015 ANGOULEME FRANCE	MODEL HPM 250L-2X15 DRAWING NO. 2_013_280
MFR NAME	ADDRESS	PART NO.
- ONLY THE ITEM DESCRIBED ON THIS DRAWING WHEN PROCURED FROM THE MANUFACTURER(S) LISTED HEREON IS APPROVED. A SUBSTITUTE ITEM SHALL NOT BE USED WITHOUT WRITTEN APPROVAL BY THE INGERSOLL-RAND COMPANY.		
- THIS PART SHALL BE LABELED WITH THE I-R NAME AND PART NUMBER. NO SUPPLIER INFORMATION OR SUPPLIER LABELING SHOULD APPEAR ON THE PART OR PART PACKAGING. IF THE PART SIZE AND/OR SHAPE PREVENT PRIVATE LABELING, THE PART SHOULD HAVE NO IDENTIFICATION OF ANY TYPE ON THE PART.		
APPROVED SOURCES OF SUPPLY		

STANDARD TOLERANCES	WARNING: THE EXPORT OR REEXPORT OF THIS DRAWING OR A PRODUCT PRODUCED BY THIS DRAWING IS SUBJECT TO U.S. EXPORT ADMINISTRATION REGULATIONS AND OTHER APPLICABLE GOVERNMENT RESTRICTIONS OR REGULATIONS.
ALL DIMENSIONS ARE IN MILLIMETERS [INCHES (IF SHOWN)]	PROPRIETARY NOTICE
UNSPECIFIED TOLERANCES:	THIS DRAWING CONTAINS CONFIDENTIAL AND TRADE SECRET INFORMATION, IS THE PROPERTY OF INGERSOLL-RAND CO., AND IS GIVEN TO THE RECEIVER IN CONFIDENCE. THE RECEIVER BY RECEPTION AND RETENTION OF THE DRAWING ACCEPTS THE DRAWING IN CONFIDENCE AND AGREES THAT, EXCEPT AS AUTHORIZED IN WRITING BY INGERSOLL-RAND CO. IT WILL (1) NOT USE THE DRAWING OR ANY COPY THEREOF OR THE CONFIDENTIAL OR TRADE SECRET INFORMATION THEREIN; (2) NOT COPY THE DRAWING; (3) NOT DISCLOSE TO OTHERS EITHER THE DRAWING OR THE CONFIDENTIAL OR TRADE SECRET INFORMATION THEREIN; AND (4) UPON COMPLETION OF THE NEED TO RETAIN THE DRAWING, OR UPON DEMAND, RETURN THE DRAWING, ALL COPIES THEREOF, AND ALL MATERIAL COPIED THEREFROM.
WHOLE : ± 1	
ONE PLACE (X) : ± 0.5	
TWO PLACE (XX) : ± 0.25	
ANGLES (X) : ± 1°	
Ingersoll-Rand Industrial Technologies	

DO NOT SCALE DRAWING	DRAWING CONFORMS TO ASME Y14.5M - 1994
CAD GENERATED DRAWING. NO MANUAL REVISIONS ALLOWED	UNLESS OTHERWISE SPECIFIED: - REMOVE ALL BURRS AND SHARP CORNERS - WELD SYMBOLS TO BE IN ACCORDANCE WITH ANSI/AWS A2.4
COPYRIGHT © 2010 INGERSOLL-RAND COMPANY ALL RIGHTS RESERVED	

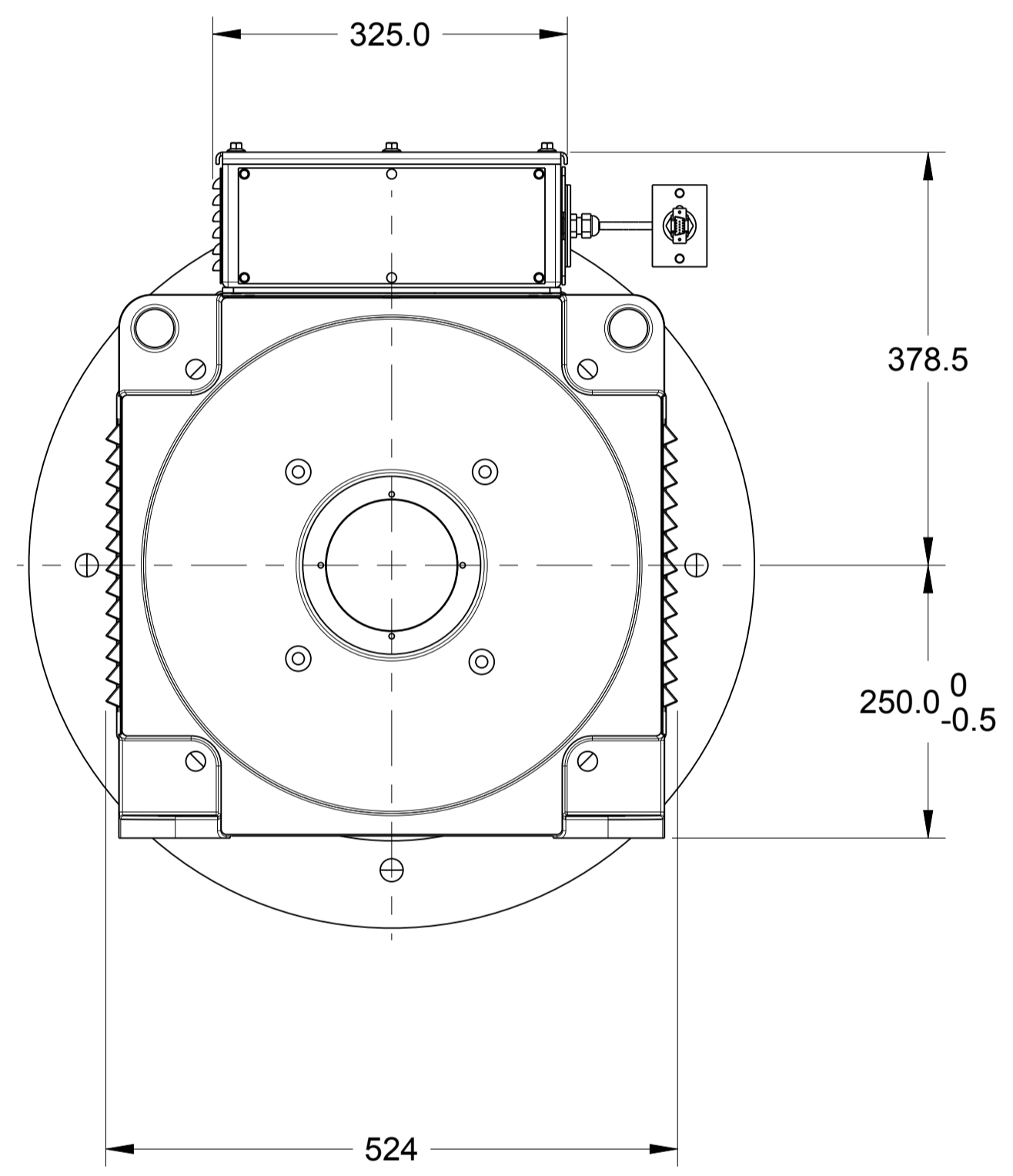
THIRD ANGLE PROJECTION	
DRAWN	DATE
L.STUTTS	2008MAR19
CHECKED	DATE
J.LINDSEY	21MAR2008
APPROVED	DATE
T.VINCENT	21MAR2008

SOURCE CONTROL DRAWING



**MOTOR, HPM 300HP
440-480 VOLTS 50/60HZ NIRV**

SIZE: A1	ESTIMATED WEIGHT (KG UNLESS OTHERWISE SPECIFIED): 650.0	DWG NO.: 23270994	REV: E
SCALE: 0.25	UNIT: N250-300HP-CC	SHEET: 1 OF 2	



HALL SENSOR (SEE NOTE 6)

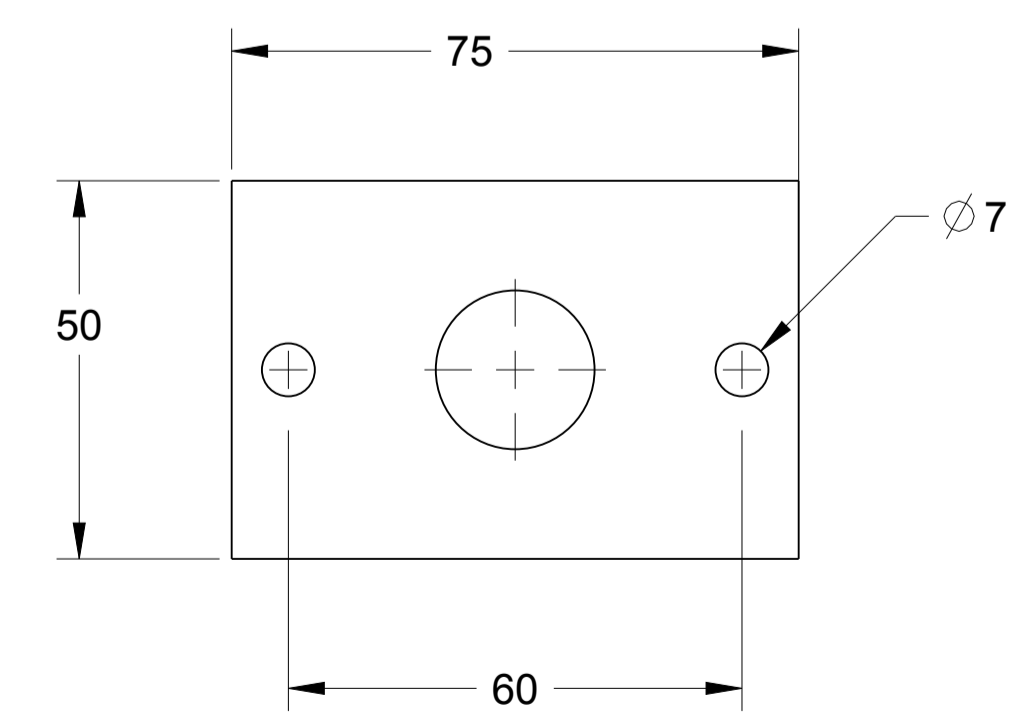
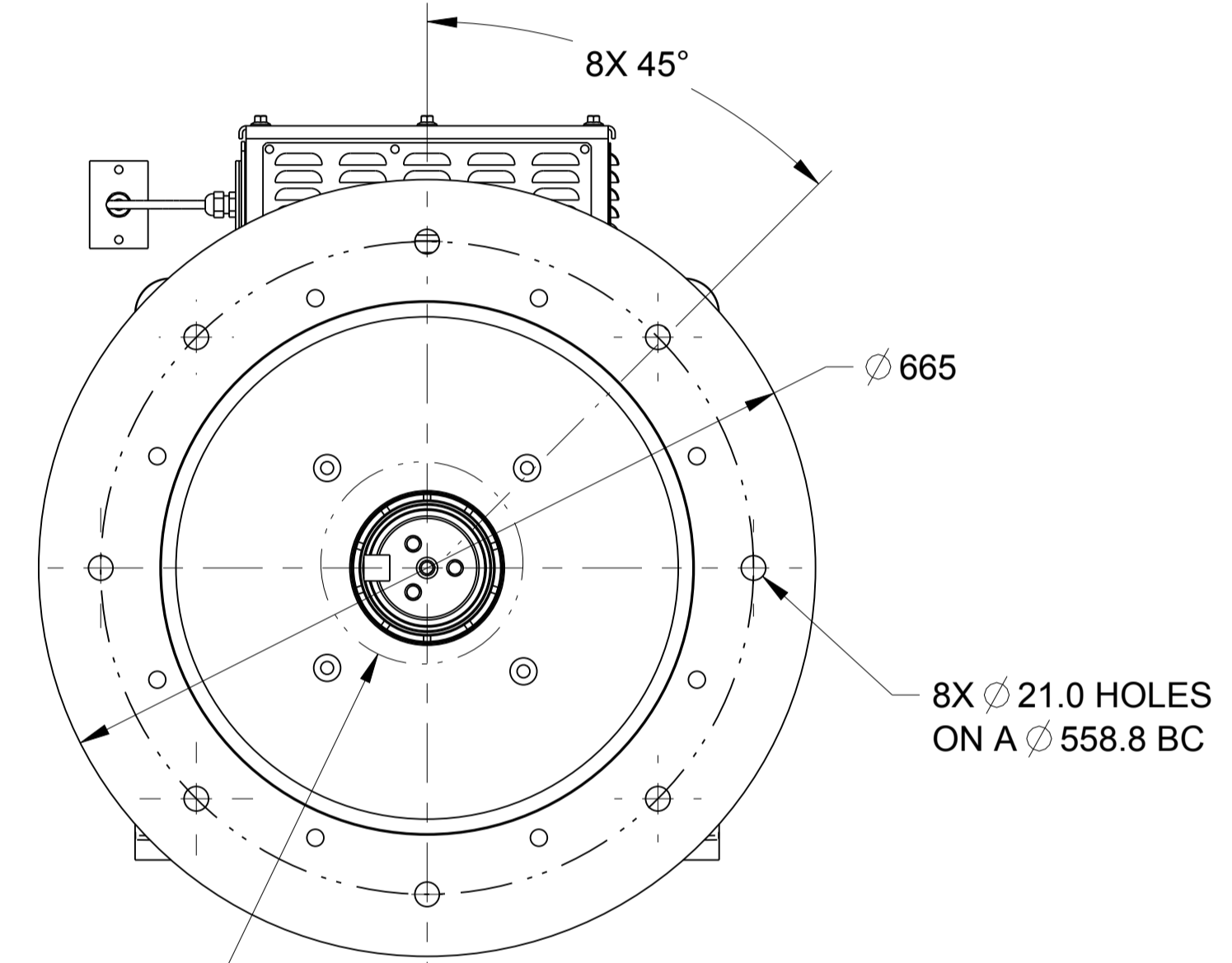
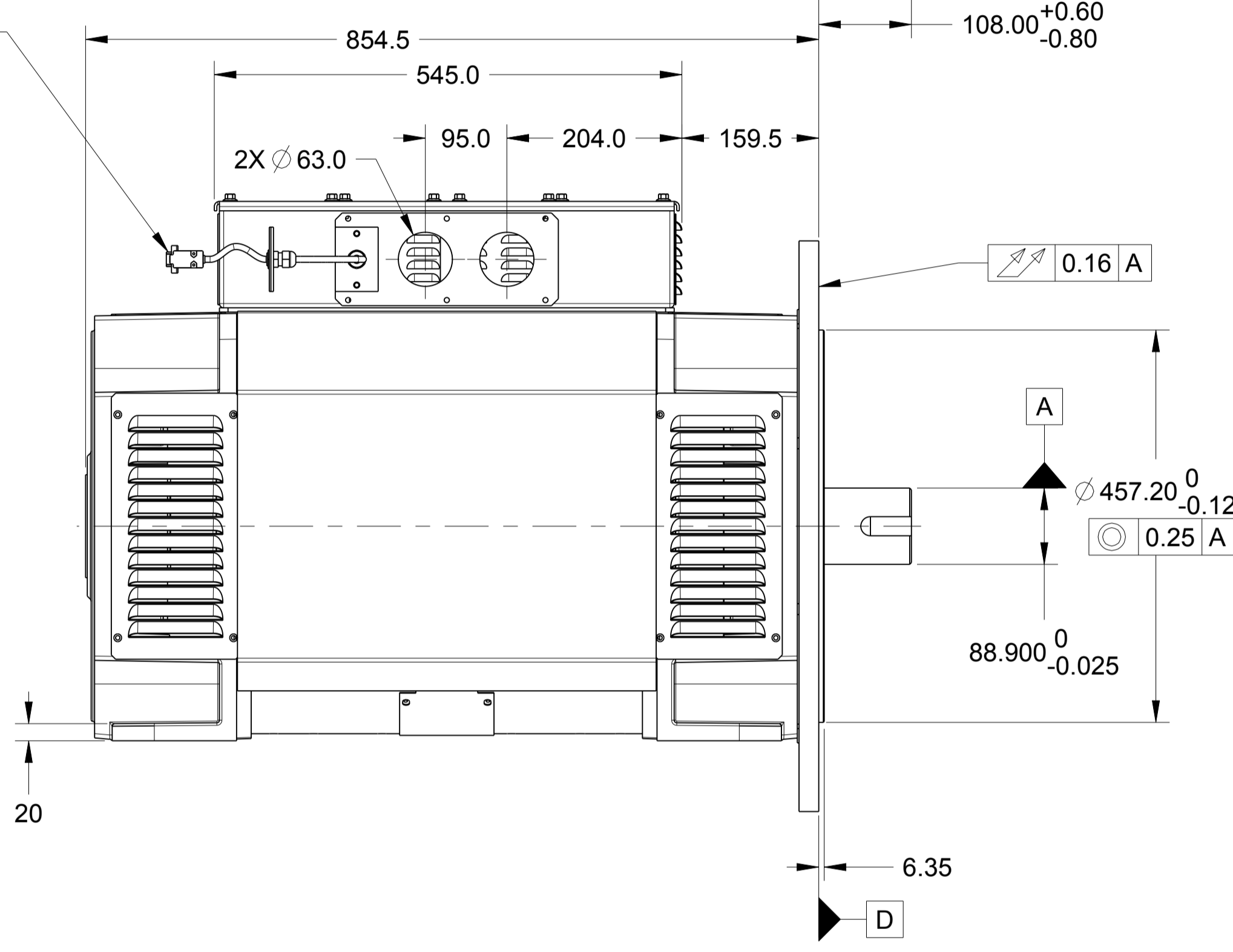
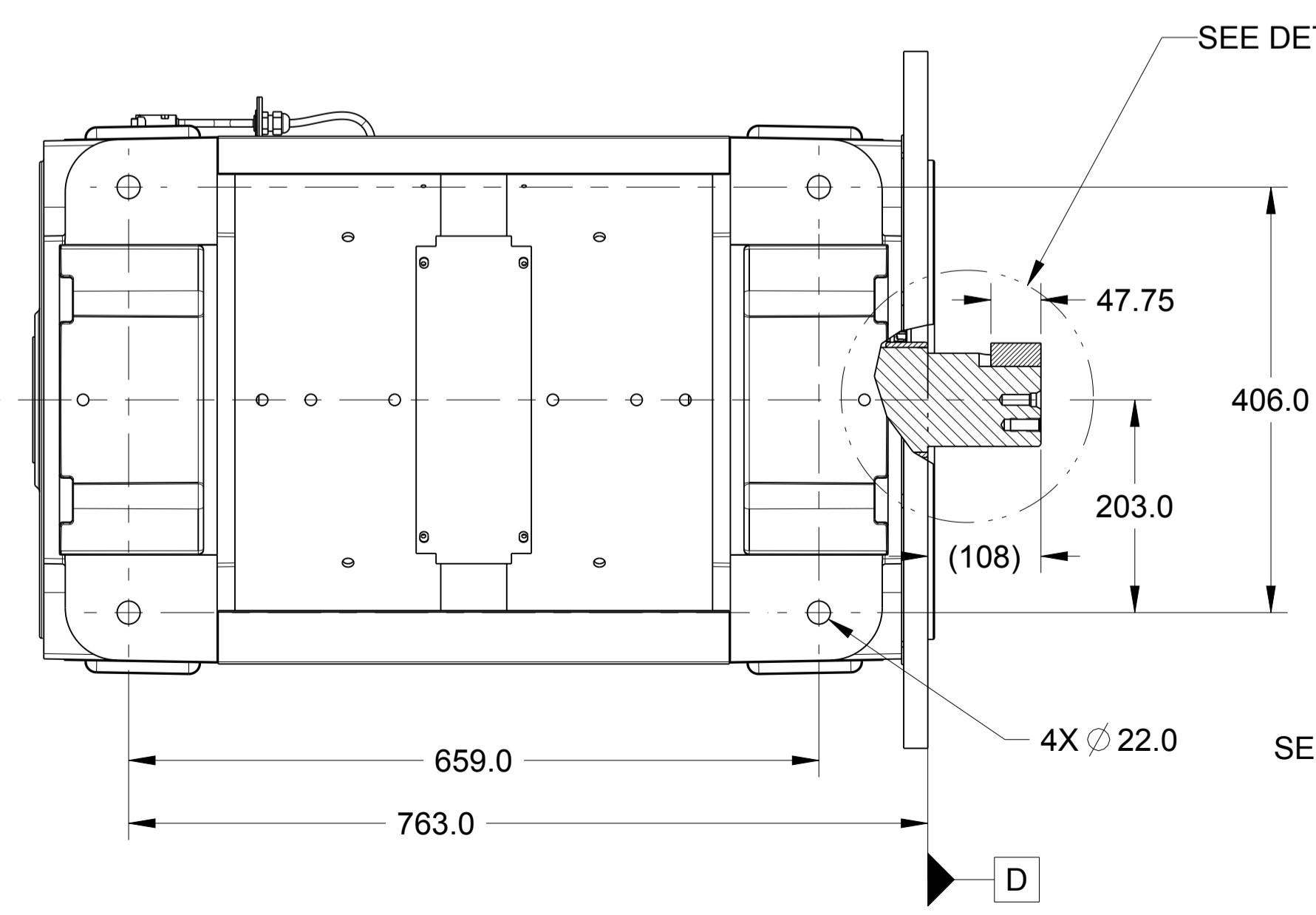
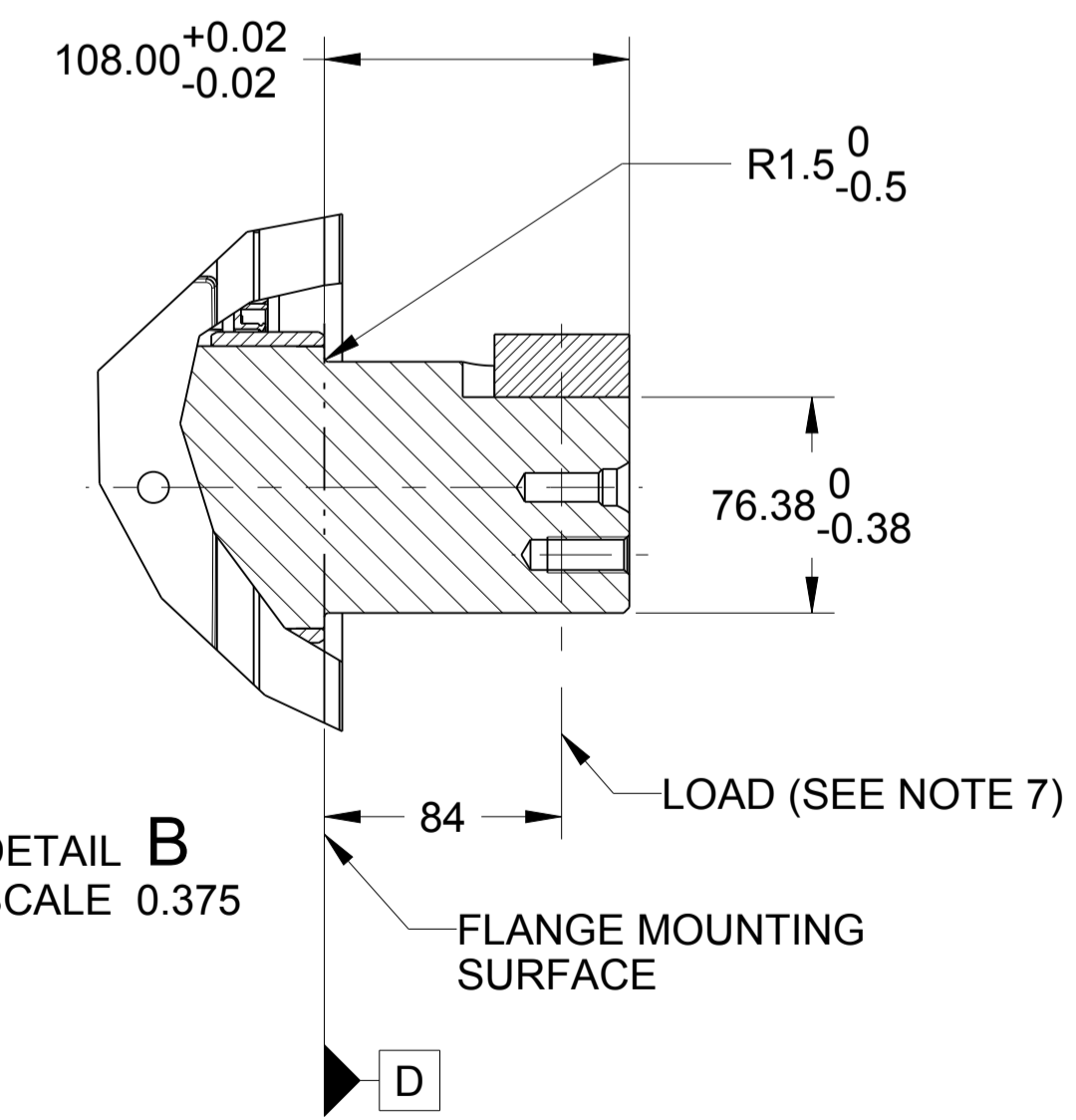


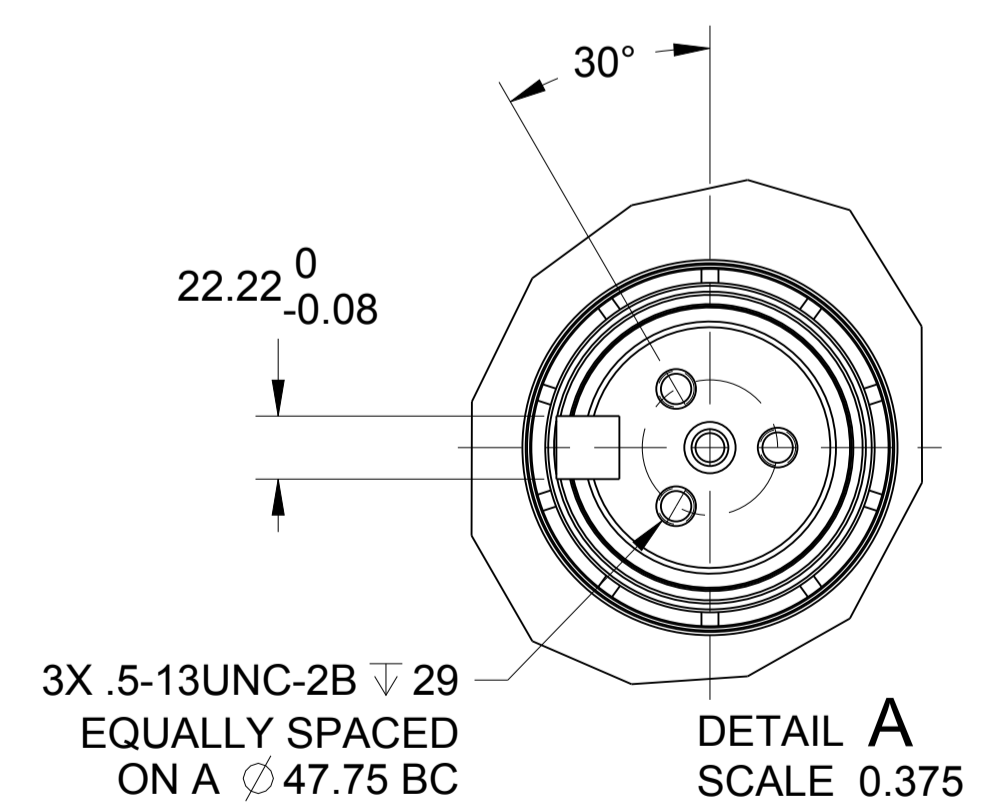
PLATE HALL SENSOR
SCALE 1.000



SECTION A-A



DETAIL B
SCALE 0.375



DETAIL A
SCALE 0.375

<small>PROPRIETARY NOTICE</small> THIS DRAWING CONTAINS CONFIDENTIAL AND TRADE SECRET INFORMATION IS THE PROPERTY OF INGERSOLL-RAND CO. AND IS GIVEN TO THE RECEIVER IN CONFIDENCE. THE RECEIVER BY ACCEPTANCE AND RETENTION OF THIS DRAWING ACCEPTS THE DRAWING IN CONFIDENCE AND AGREES THAT, EXCEPT AS AUTHORIZED IN WRITING BY INGERSOLL-RAND CO., IT WILL (1) NOT USE THE DRAWING OR ANY COPY THEREOF OR THE CONFIDENTIAL OR TRADE SECRET INFORMATION THEREIN, (2) NOT COPY THE DRAWING, (3) NOT DISCLOSE TO OTHERS EITHER THE DRAWING OR THE CONFIDENTIAL OR TRADE SECRET INFORMATION THEREIN, AND (4) UPON COMPLETION OF THE NEED TO RETAIN THE DRAWING, OR UPON DEMAND, RETURN THE DRAWING, ALL COPIES THEREOF, AND ALL MATERIAL COPIED THEREFROM.		TITLE MOTOR, HPM 300HP 440-480 VOLTS 50/60HZ NIRV	
SIZE A1	DWG NO. 23270994	REV E	
SCALE 0.19	SHEET 2 OF 2		